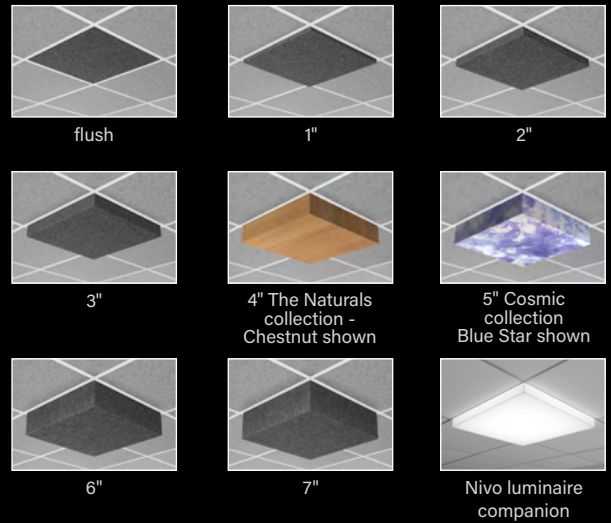
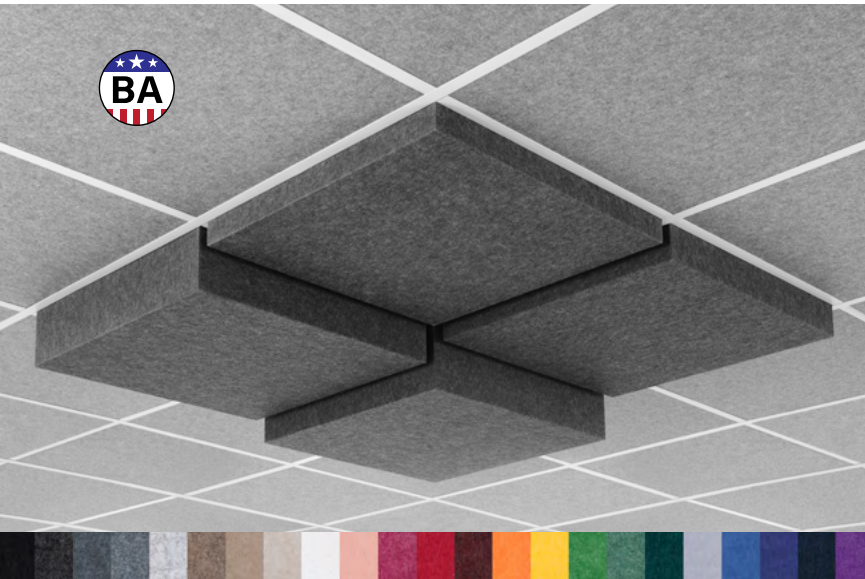


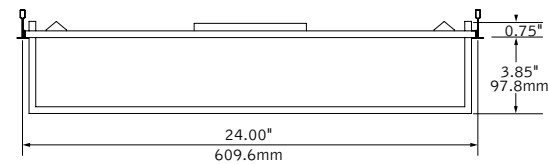
Nivo® Acoustic

UNLIT CEILING TILE



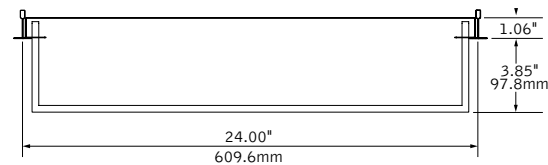
DIMENSIONAL DATA

4" Drop Tile

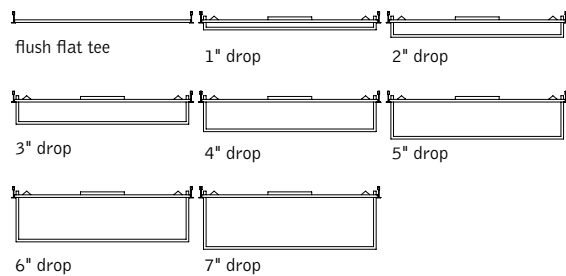


4" Drop Tile

Plenum/Chicago Plenum



Tile options



FEATURES

A 2x2 sound absorbing tile available in flush to 7" drop heights in 1" increments.

Pair with Nivo luminaires to create a coordinated look in interior spaces.

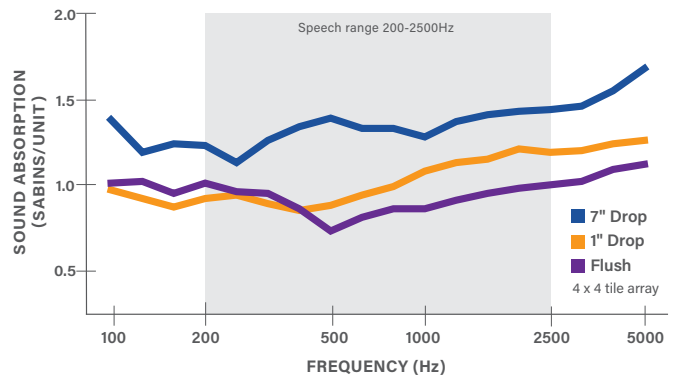
Noise Reduction Coefficient (NRC) ranges from 0.9 to 1.3 depending on tile drop height. Refer to ASTM C423 test reports for more information.

Wide range of color options provides design flexibility and personalization for any project.

Plenum option meets construction requirements for CCEA (Chicago Plenum) marking, 2015 IBC 602.2 & 2018 NFPA 90A.

Available in a range of curated printed finish options, including The Naturals and Cosmic.

ACOUSTIC PERFORMANCE*

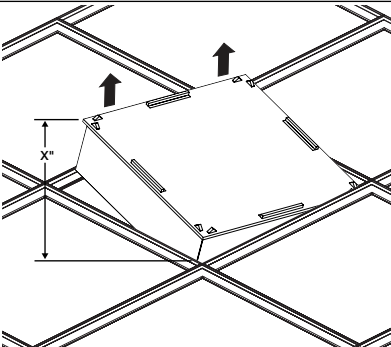


*Standard tile only. Plenum results will vary.

fixture:

project:

INSTALLATION REQUIREMENTS

| Drop height (in) | Above ceiling clearance required (in) | |
|------------------|---------------------------------------|---|
| Flush | 7" |  |
| 1" | 10" | |
| 2" | 12" | |
| 3" | 14" | |
| 4" | 17" | |
| 5" | 19" | |
| 6" | 21" | |
| 7" | 23" | |

SPECIFICATIONS

Acoustic Material

| | |
|--|---|
| Content | Housing material is 100% polyester containing up to 50% of recycled plastic bottles (PET felt) with an ASTM E-84 Class A / CAN ULC S102 fire rating and is moisture resistant. See page 3 for color offering. Acoustic material colors are subject to change without notice. For the most current color options, please visit www.focalpointlights.com/acousticsolutions . Lead times may vary depending on color. |
| Cleaning and Care | Remove dust and debris with a clean, soft, lint-free cloth or vacuum |
| Surface Burning Characteristics | ASTM E84 Class A / CAN ULC S102 Flame Spread: 0, Smoke Development Index: 300 |
| Colorfastness | AATCC 16A Option 3 Class 4 minimum at 40 hours |
| PET Thickness | 9mm |

Acoustic Performance

Acoustic testing is performed on all Focal Point acoustic products and varies based on installation and configuration. ASTM C423 test reports can be downloaded from focalpointlights.com. Contact acoustic.solutions@focalpointlights.com for technical questions.

| | |
|------------|---|
| NRC | Noise Reduction Coefficient (NRC) is the average of how absorptive a material is at various frequencies within the human speech frequency range. Two materials with the same rating may not perform the same in application. Typically, an NRC of 0 indicates perfect reflection, and an NRC of 1 is designated as perfect absorption. However, based on the testing methodology and depending upon the material's shape or surface area products can test at an NRC greater than 1. NRC = 0.9 -1.3, dependent on tile drop height |
|------------|---|

Weight

Individual tiles will not exceed 5lbs. Plenum/Chicago Plenum tiles will not exceed 8lbs.

Assembly & Installation

Field assembly required. Simple four-step installation process. Refer to installation instructions for details. Consult factory for pre-assembled options.

Reliability

At Focal Point, our products are designed to stand the test of time. Each product is engineered using superior components, manufactured with the utmost care and rigorously tested.

Warranty

1-year limited warranty.

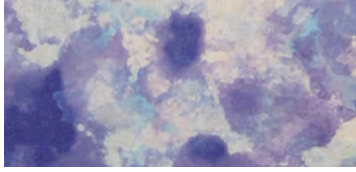
ORDERING

| Series | AUNV | |
|--|------|----|
| Nivo Acoustic | AUNV | |
| Nominal Size | | 22 |
| 2' x 2' | 22 | |
| (consult factory for custom sizes) | | |
| Profile | | |
| Flush | 0D | |
| 1" Drop | 1D | |
| 2" Drop | 2D | |
| 3" Drop | 3D | |
| 4" Drop | 4D | |
| 5" Drop | 5D | |
| 6" Drop | 6D | |
| 7" Drop | 7D | |
| Mounting | | |
| (Ceiling grid by others) | | |
| 15/16" Layin | G1 | |
| 9/16" Layin | G2 | |
| (Consult factory for tegular availability) | | |
| Factory Options | | |
| Plenum / Chicago Plenum | CP | |
| (Contact factory for Flush tile) | | |
| Color | | |
| See page 3 for color offering | | |

Acoustic Materials



COSMIC (25% SCALE)



BLUE STAR

BSR



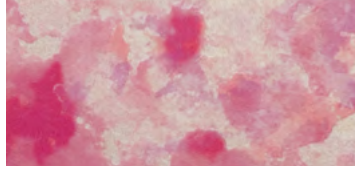
GREEN QUASAR

GQR



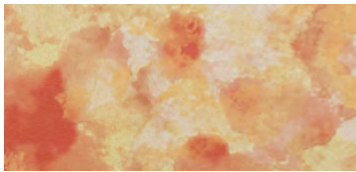
MOON ROCK

MRK



PINK NEBULA

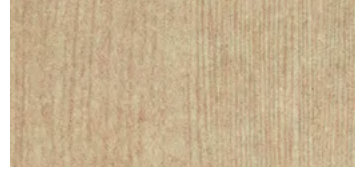
PPN



SOLAR FLARE

SRF

THE NATURALS (25% SCALE)



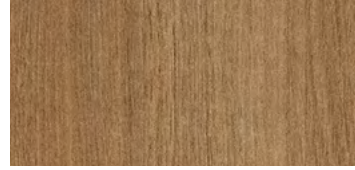
LIGHT OAK

LOK



GRAY ELM

GRE



CHESTNUT

CHT



WALNUT

WLT

STANDARD PET



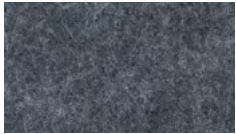
PURE BLACK

PBK



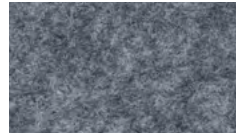
CHARCOAL GRAY

CHG



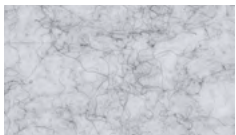
SLATE

SLT



SHADOW GRAY

SDG



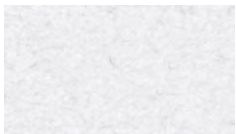
SILVER GRAY

SLG



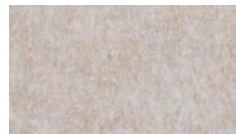
PEARL ICE

PIC



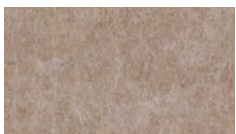
CLASSIC WHITE

CWH



NATURAL LINEN

NTL



HAZELWOOD

HZW

PREMIUM PET



CORNFLOWER BLUE

CFB



DENIM BLUE

DNB



MIDNIGHT BLUE

MNB



DEEP PURPLE

DPP



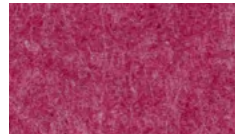
BRICK RED

BRD



CHERRY RED

CHR



BERRY

BRY



BLUSH

BLS



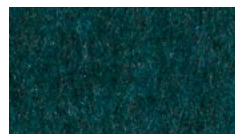
CARROT

CRT



PINEAPPLE

PNA



DEEP WATER

DWT



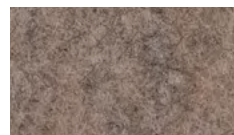
SEAFOAM

SFM



EMERALD GREEN

EMG



LIMESTONE

LMS

Slight color variations are inherent to the PET felt manufacturing process. Color renditions on screens vary due to display settings and lighting conditions.

Order samples at focalpointlights.com/Samples

