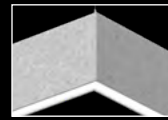
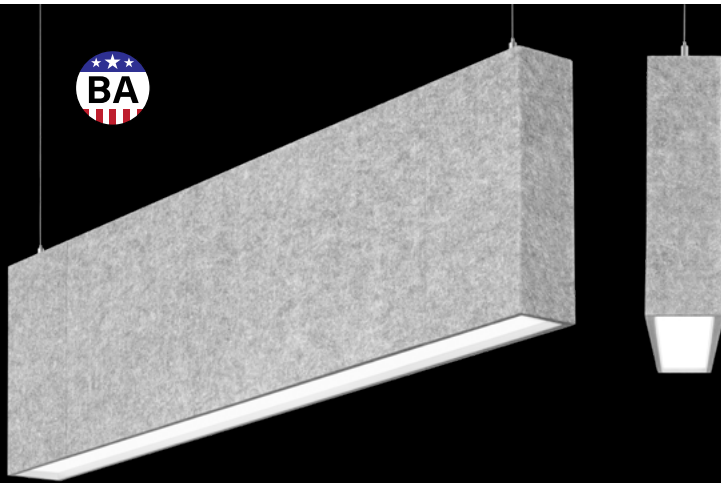
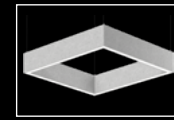


# Seem® 2 Acoustic

LED DIRECT



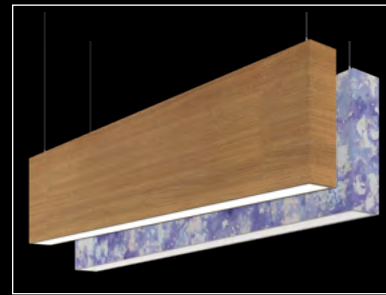
90° corner detail



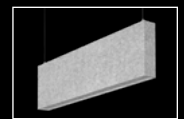
Rectangle pattern



Left and right corner pattern



The Naturals collection - Chestnut shown  
Cosmic Collection - Blue Star shown

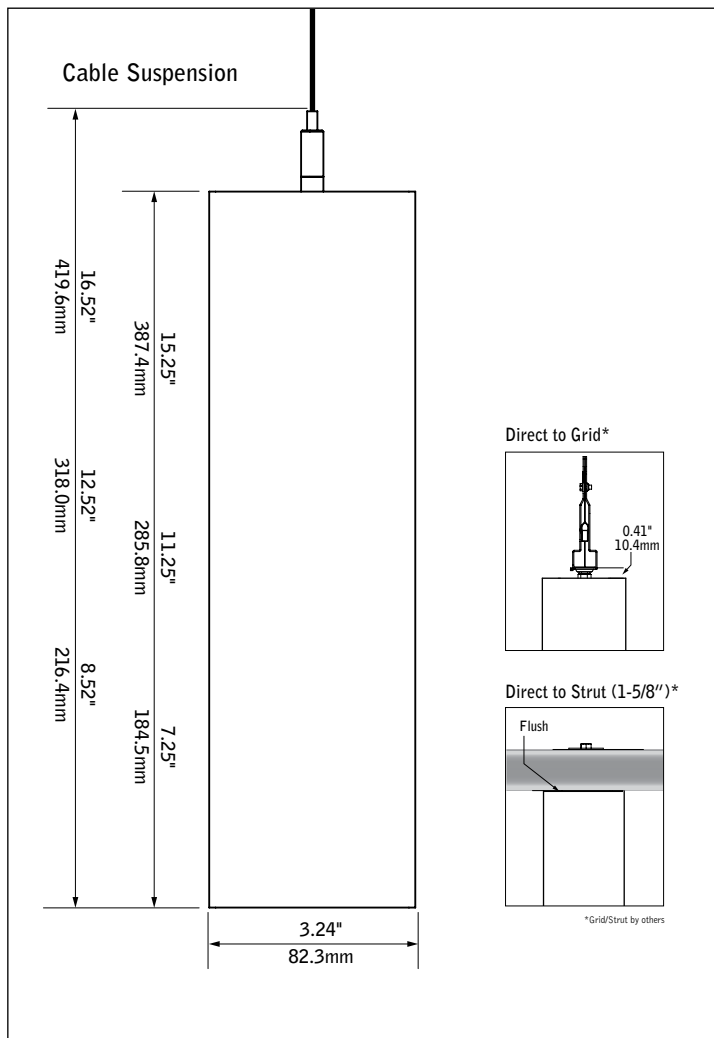


Seem 2 Acoustic Unlit companion



AirCore Blade companion

## DIMENSIONAL DATA



## FEATURES

2.5" aperture sound absorbing linear direct LED luminaire..

Available in 3' to 208' lengths in 1" increments with 8", 12" or 16" nominal housing heights in straight lengths or patterns with 90° corners.

Frosted acrylic lens provides uninterrupted illumination, without pixels or shadows.

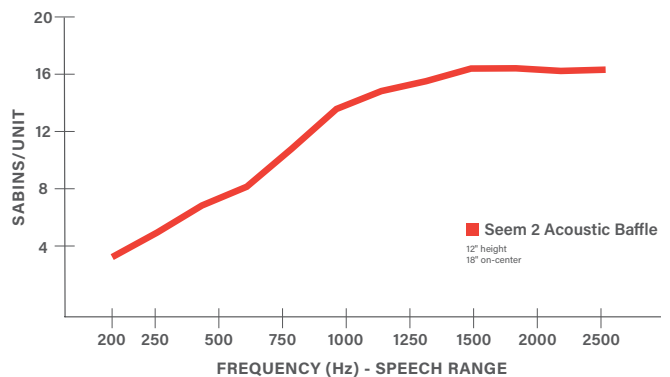
LED position and lens material optimized to provide the perfect blend of high performance and visual comfort.

AirCore® Technology: patented, eco-friendly technology that maximizes sound absorption and reduces ecological impact.

Pair with Seem 2 Acoustic unlit baffle, AirCore Blade®, or TruBlade® to create a coordinated look in interior spaces.

Available in a range of curated printed finish options, including The Naturals and Cosmic.

## ACOUSTIC PERFORMANCE

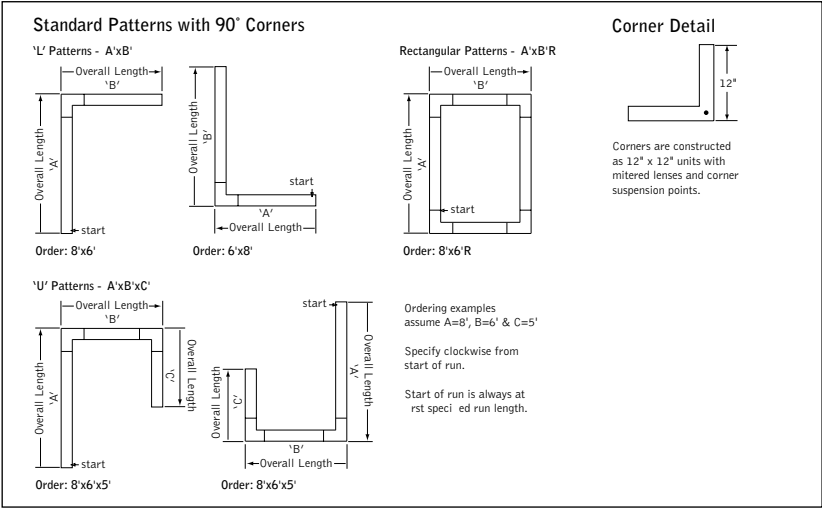


All products were tested in multiple configured arrays. Total absorption will vary based on configuration. Please refer to ASTM C423 reports for more information.

fixture:

project:

PATTERN DETAILS



SPECIFICATIONS

Acoustic Material

Content	Housing material is 100% polyester containing up to 50% of recycled plastic bottles (PET felt) and is moisture resistant. See page 3 for color offering. Acoustic material colors are subject to change without notice. For the most current color options, please visit <a href="http://focalpointlights.com/acoustic-solutions">focalpointlights.com/acoustic-solutions</a> . Lead times may vary depending on color.
Cleaning and Care	Remove dust and debris with a clean, soft, lint-free cloth or vacuum
PET Thickness	9mm
Surface Burning Characteristics	ASTM E84 Class A / CAN ULC S102 Flame Spread: 0, Smoke Development Index: 300
Colorfastness	AATCC 16A Option 3 Class 4 minimum at 40 hours

Acoustic Performance

Acoustic testing is performed on all Focal Point acoustic products and varies based on installation and configuration. ASTM C423 test reports can be downloaded from [focalpointlights.com](http://focalpointlights.com). Contact [acoustic.solutions@focalpointlights.com](mailto:acoustic.solutions@focalpointlights.com) for technical questions.

Sabins	Sabins is a unit of sound absorption. It measures how well one square foot of material absorbs sound. Focal Point has averaged the Sabins per unit at four specific frequency bands representing the human speech range (250, 500, 1000, 2000 Hz) to determine the Sabins per product. 8' length, 12" height: 12" OC = 10.26 Sabins, 18" OC = 11.67 Sabins, 24" OC = 12.43 Sabins
--------	--------------------------------------------------------------------------------------------------------------------------------------------------------------------------------------------------------------------------------------------------------------------------------------------------------------------------------------------------------------------------------------

LED System

Proprietary linear LED module incorporates premium LEDs on a robust platform to achieve excellent thermal management. LEDs are placed to promote a uniform appearance. Available in 2700K, 3000K, 3500K or 4000K with both 80 and 90 CRI options. LED drivers are replaceable from above. Color accuracy <3 SDCM.

Weight- 12" height, 4' length = 18.6lbs

Optic

Reflectors fabricated of 22 Ga. steel finished in Matte White powder coat. Extruded acrylic lens .05" thick with frosted finish, up to 8' continuous. .002" thick clear acrylic dust cover.

Mounting

Minimum mounting height 7.5" from the ceiling.

Electrical

Luminaires are pre-wired with factory installed branch circuit wiring and over-molded quick connects. Standard 120-277V constant current driver includes 0-10V analog dimming. Power factor > .9. Power cord white as standard.

Canopy

Polyester powder coat applied over a multi-stage pre-treatment. Canopy white as standard.

Emergency Battery

Emergency output - 10 watts for 90 minutes. Maximum mounting height: 16.83 ft  
See EM/EC Guide (page 5) for default locations and ordering details.

Labels

UL and cUL listed. Suitable for Dry Locations, indoor use only.

Lumen Maintenance

Reported: L70 at >61,000 hours Calculated: L70 at 470,000 hours  
L90 at >61,000 hours L90 at 115,000 hours

Derived from EPA TM-21 calculator. Based on typical conditions, consult factory for additional data.

Reliability

At Focal Point, our products are designed to stand the test of time. Each luminaire is engineered using superior components, manufactured with the utmost care and rigorously tested. Contact us for reliability data.

Warranty

LED system rated for operation in ambient environments up to 25°C and when mounted no less than 7.5" from the ceiling. 5-year limited warranty.

4' PERFORMANCE CHART - See page 4

Focal Point LLC reserves the right to change specifications for product improvement without notification.

ORDERING

Luminaire Series	ASM2S
Seem 2 Acoustic Direct LED	ASM2S
Shielding	
Regress Lens	RL
Regress Batwing Lens	BW
Regress Asymmetric Lens	AS
Luminaire Height (heights are nominal)	
8"	8
12"	12
16"	16
Direct Lumen Output	
200 Lumens per foot	200LF
300 Lumens per foot	300LF
400 Lumens per foot	400LF
500 Lumens per foot	500LF
700 Lumens per foot	700LF
900 Lumens per foot	900LF
1000 Lumens per foot	1000LF
1200 Lumens per foot	1200LF
Color Temperature	
2700K, 80CRI or 90CRI	27K or 927K
3000K, 80CRI or 90CRI	30K or 930K
3500K, 80CRI or 90CRI	35K or 935K
4000K, 80CRI or 90CRI	40K or 940K
Circuits & Zones	
1 Circuit, non-emergency	1C
Consult Ordering Guide on page 5 for multiple circuiting and zoning options	_C_Z_DL
Voltage	UNV
120/277 UNV Volt	UNV
Control System & Dimming Level	
0-10V - 10% Dimming	LD1
0-10V - 1% Dimming	L11
Lutron Hi-Lume EcoSystem (LDE1) - 1% Dimming	LH1
DALI 1% Dimming	D11
Mounting	
Suspended	
(Mounting hang kits ship with order. Power cable is 18" longer than suspension length. Consult factory for longer power cable lengths.)	
24" Cable Suspension	J24__
48" Cable Suspension	J48__
96" Cable Suspension	J96__
120" Cable Suspension	J120__
(Specify canopy color White (WH), Black (BK) or Titanium Silver (TS). Example: J24WH.) (Consult factory for sloped ceiling applications)	
Surface Mounted	
(30" power cable standard. Consult factory for longer power cable lengths.)	
Direct/Flush to Grid	DTG
Direct/Flush to Strut	DTS
Factory Options	
(See Ordering Guide on page 5 for ordering details for DC, EC, EM & ECD.)	
Black Cord	BKCD
Daylight Circuit	_DC
Emergency Circuit	_EC
Emergency Battery Pack†	_EM
Emergency Control Device†	_ECD
†(4' minimum length.)	
Acoustic Panel Color	
See page 3 for color offering	
Luminaire Length	ft in
(Leave blank for patterns. Luminaires are 3/4" longer than specified and cannot be cut to length or joined in the field.)	
Specify length in 1" increments	_ft_in
from 3' to 208'	
(16' maximum for DTG, consult factory for alternate lengths.)	
Pattern Options	
(Patterns available with LD1 and L11 drivers only.) (5' minimum leg length for L patterns. 6' minimum leg length for U and Rectangle patterns)	
'L' pattern	A' x B'
'U' pattern	A' x B' x C'
Rectangular pattern	A' x B' R
(Consult factory for other pattern options)	

# Acoustic Materials



## COSMIC (25% SCALE)



BLUE STAR

BSR



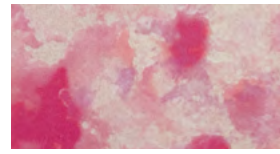
GREEN QUASAR

GQR



MOON ROCK

MRK



PINK NEBULA

PPN



SOLAR FLARE

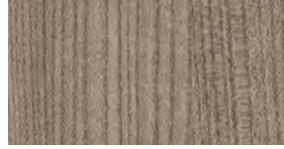
SRF

## THE NATURALS (25% SCALE)



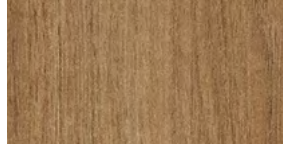
LIGHT OAK

LOK



GRAY ELM

GRE



CHESTNUT

CHT



WALNUT

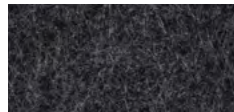
WLT

## STANDARD PET



PURE BLACK

PBK



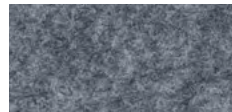
CHARCOAL GRAY

CHG



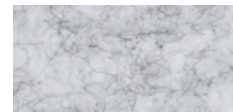
SLATE

SLT



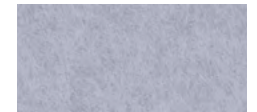
SHADOW GRAY

SDG



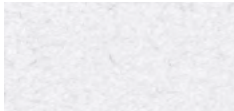
SILVER GRAY

SLG



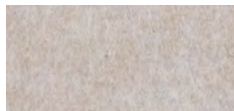
PEARL ICE

PIC



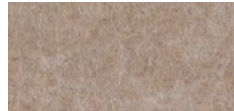
CLASSIC WHITE

CWH



NATURAL LINEN

NTL



HAZELWOOD

HZW

## PREMIUM PET



CORNFLOWER BLUE

CFB



DENIM BLUE

DNB



MIDNIGHT BLUE

MNB



DEEP PURPLE

DPP



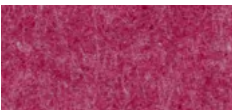
BRICK RED

BRD



CHERRY RED

CHR



BERRY

BRY



BLUSH

BLS



CARROT

CRT



PINEAPPLE

PNA



DEEP WATER

DWT



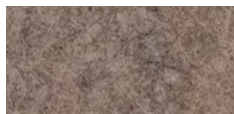
SEAFOAM

SFM



EMERALD GREEN

EMG



LIMESTONE

LMS

## Declare.

**PET**  
Focal Point, LLC

Final Assembly: Chicago, Illinois, USA  
Life Expectancy: 30 Year(s)  
End of Life Options: Salvageable/Reusable in its Entirety, Recyclable (100%)

### Ingredients:

Polyethylene terephthalate: PET; N, N'-Ethylene bisstearamide; Octadecanamide; N,N'-1,2-ethanedithiolbis-Stearic Acid; Stearic Acid; Antioxidant 1076; Benzenesulfonyl acid, 3,5-bis(1,1-dimethylethyl)-4-hydroxy-octadecyl ester; Antioxidant KY-405; Benzenamine, 4-(1-methyl-1-phenylethyl)-N-[4-(1-methyl-1-phenylethyl)phenyl]; Titanium Dioxide: Titanium dioxide

### Living Building Challenge Criteria:

#### I-13 Red List:

■ LBC Red List Free % Disclosed: 100% at 100ppm  
□ LBC Red List Approved VOC Content: Not Applicable  
■ Declared

I-10 Interior Performance: Not Compliant  
I-14 Responsible Sourcing: Not Applicable

FPL-0001  
EXP: 01 JUN 2026  
Original Issue Date: 2020

INTERNATIONAL LIVING FUTURE INSTITUTE™ [living-future.org/declare](http://living-future.org/declare)

## Declare.

**Seem® 2 Acoustic**  
Focal Point, LLC

Final Assembly: Chicago, Illinois, USA  
Life Expectancy: 10 Year(s)  
End of Life Options: Recyclable (55%), Landfill (45%)

### Ingredients:

Polyethylene Terephthalate; Steel; UNS G1008; Copper; Polymethyl methacrylate; Small Electrical Components - RoHS Compliant; Poly(Imino(1,6-dioxo-1,6-hexanedyl)imino-1,6-hexanedyl); Polyvinyl chloride; Steel, carbon; Zinc; Aluminum; Steel manufacture, chemicals; Methyl methacrylate; Polyethylene

†LBC Temp Exception RL-002 - Small Electrical Components

### Living Building Challenge Criteria:

#### I-13 Red List:

□ LBC Red List Free % Disclosed: 100% at 100ppm  
□ LBC Red List Approved VOC Content: Not Applicable  
■ Declared

I-10 Interior Performance: Not Applicable  
I-14 Responsible Sourcing: Not Applicable


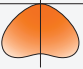

FPL-0005  
EXP: 01 JAN 2026  
Original Issue Date: 2024

INTERNATIONAL LIVING FUTURE INSTITUTE™ [living-future.org/declare](http://living-future.org/declare)

Slight color variations are inherent to the PET felt manufacturing process. Color renditions on screens vary due to display settings and lighting conditions.

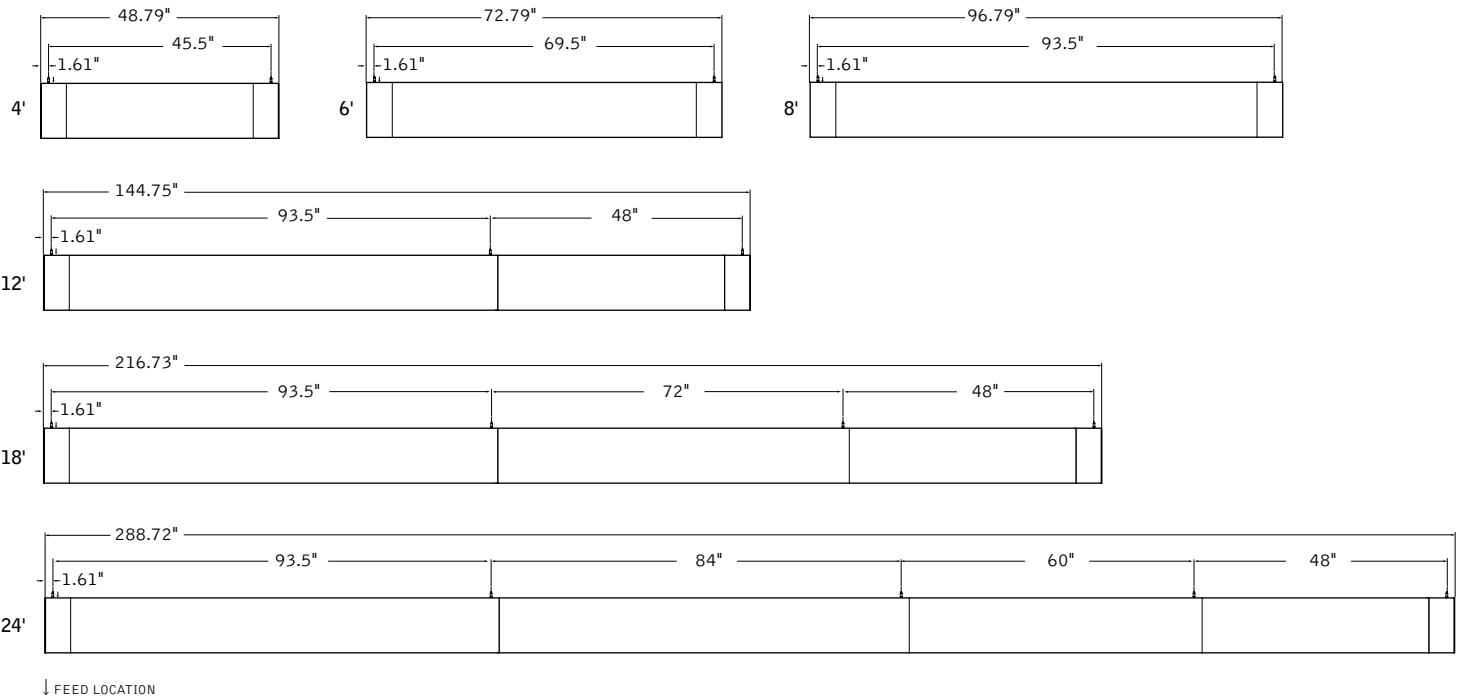
Order samples at [focalpointlights.com/Samples](http://focalpointlights.com/Samples)

4' PERFORMANCE CHART - REGRESS LENS

Direct Lumen Output	Delivered Lumens	Tested System Watts	Lumens per Watt (LPW)		
					
			AS	BW	RL
200LF	800	8	110	106	101
300LF	1200	12	114	110	104
400LF	1600	15	120	115	107
500LF	2000	18	122	117	109
700LF	2800	26	120	115	106
900LF	3600	34	120	114	105
1000LF	4000	38	119	114	105
1200LF	4800	46	118	112	104

Based on 3500k, 80CRI, 4' lengths. 90 CRI Lumen multiplier = 0.87. Lumen output may vary +/- 5%. Actual wattage may vary +/- 5%

MOUNTING DETAILS (see Run Chart on Ordering Guide for number of hang points per run)



# Ordering Guide

## Linear Circuitry, Zones & Factory Options

### HOW TO USE THIS GUIDE

Fill out the worksheet on the following page to specify your requirements for circuitry, zones, and factory options.

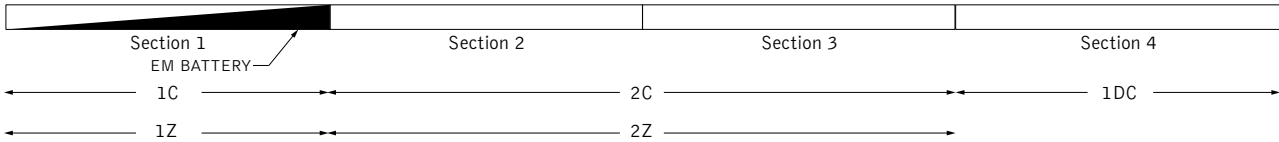
Refer to the run chart for standard run configurations, consult factory for custom configurations.

Complete the Totals / Ordering Codes at the bottom of the worksheet and add to your ordering logic on the cut sheet.

Submit the worksheet along with your order.

EXAMPLE	TOTAL RUN LENGTH: 30ft		JOB NAME:			FIXTURE TYPE:		
	HOUSING SECTION	SECTION LENGTH	SHARED ELECTRICAL FEED, NORMAL POWER			FACTORY OPTIONS		
						SEPARATE ELECTRICAL FEEDS		
			SWITCHING CIRCUIT	DIMMING ZONE	DAYLIGHT ZONE	DAYLIGHT CIRCUIT	EMERGENCY CIRCUIT	ECD
	1	8	1C	1Z				
	2	7	2C	2Z				
	3	7	2C	2Z				
	4	8				1DC		
	Totals / Ordering Codes		2C	2Z		1DC		1EM

ORDERING: ASM2S-RL-12-500LF-35K- 2C2Z -UNV-LD1-J24- 1DC-1EM -CWH-30ft



KEY	
<b>C = Switching Circuit</b> Switched Hot / Shared Neutral	<b>DC = Daylight Circuit</b> Switched Hot / Separate Neutral
<b>Z = Dimming Zone</b> Dimming Control Wires	<b>EC = Emergency Circuit</b> Switched Hot / Separate Neutral
<b>DL = Daylight Zone</b> Daylight Dimming Control Wires	<b>EM = Emergency Battery</b> Unswitched Hot / Shared Neutral
	<b>ECD = Emergency Control Device</b> Unswitched Hot / Separate Neutral

### DEFAULTS

- Zones and Factory Options illuminate entire sections from 4' to 8' in length.
- One shared or isolated circuit and zone required per housing section.
- Limit of one EM or ECD per housing section.
- Additional electrical feed required for applications greater than three shared circuits and zones.
- Each DC, EC and ECD require an additional electrical feed.
- ECD not available in the same housing section as EC.
- Longer lead times and additional pricing may apply for custom run configurations.

### CUSTOM LENGTHS

- If partial illumination of emergency or daylight section is required, indicate in ordering guide and add "partial illumination" in Order Notes. Drawing required.
- Engineering validation required, longer lead times may apply.



# Ordering Guide Worksheet

Linear Circuitry, Zones & Factory Options

WORKSHEET

TOTAL RUN LENGTH:      JOB NAME:      FIXTURE TYPE:

HOUSING SECTION	SECTION LENGTH	SHARED ELECTRICAL FEED, NORMAL POWER			FACTORY OPTIONS			
		SWITCHING CIRCUIT	DIMMING ZONE	DAYLIGHT ZONE	SEPARATE ELECTRICAL FEEDS			EM
					DAYLIGHT CIRCUIT	EMERGENCY CIRCUIT	ECD	
1								
2								
3								
4								
5								
6								
7								
8								
9								
10								
11								
12								
13								
14								
15								
16								
17								
18								
19								
20								
Totals / Ordering Codes								

Combine to create Circuits & Zones ordering code

Enter as individual Factory Options

## RUN CHART

Run length (ft)	Housing Configuration Section Lengths	# of hang points per run
9	5 + 4	3
10	6 + 4	3
11	7 + 4	3
12	8 + 4	3
13	8 + 5	3
14	8 + 6	3
15	8 + 7	3
16	8 + 8	3
17	8 + 5 + 4	4
18	8 + 6 + 4	4
19	8 + 7 + 4	4
20	8 + 7 + 5	4
21	8 + 7 + 6	4
22	8 + 7 + 7	4
23	8 + 7 + 8	4
24	8 + 7 + 5 + 4	5
25	8 + 7 + 6 + 4	5
26	8 + 7 + 7 + 4	5
27	8 + 7 + 7 + 5	5

Run length (ft)	Housing Configuration Section Lengths	# of hang points per run
28	8 + 7 + 7 + 6	5
29	8 + 7 + 7 + 7	5
30	8 + 7 + 7 + 8	5
31	8 + 7 + 7 + 5 + 4	6
32	8 + 7 + 7 + 6 + 4	6
33	8 + 7 + 7 + 7 + 4	6
34	8 + 7 + 7 + 7 + 5	6
35	8 + 7 + 7 + 7 + 6	6
36	8 + 7 + 7 + 7 + 7	6
37	8 + 7 + 7 + 7 + 8	6
38	8 + 7 + 7 + 7 + 5 + 4	7
39	8 + 7 + 7 + 7 + 6 + 4	7
40	8 + 7 + 7 + 7 + 7 + 4	7
41	8 + 7 + 7 + 7 + 7 + 5	7
42	8 + 7 + 7 + 7 + 7 + 6	7
43	8 + 7 + 7 + 7 + 7 + 7	7
44	8 + 7 + 7 + 7 + 7 + 8	7
45	8 + 7 + 7 + 7 + 7 + 5 + 4	8
46	8 + 7 + 7 + 7 + 7 + 6 + 4	8

Standard run configurations, consult factory for custom configurations and longer run lengths.