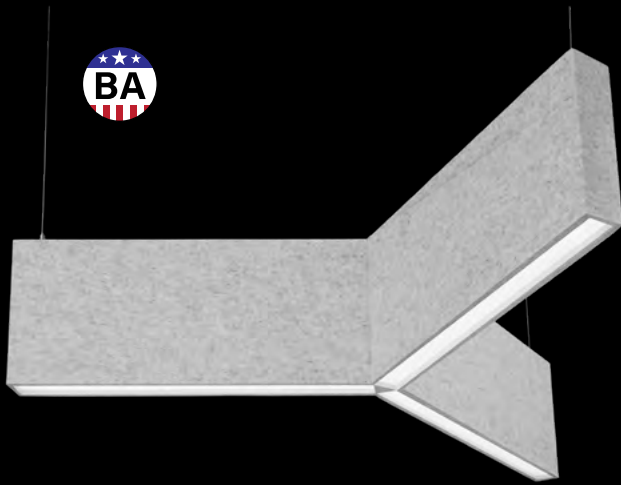
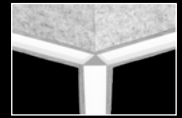


# Seem® 1 Acoustic Trio

LED DIRECT



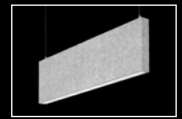
The Naturals collection - Gray Elm shown  
Cosmic Collection - Solar Flare shown



Center detail

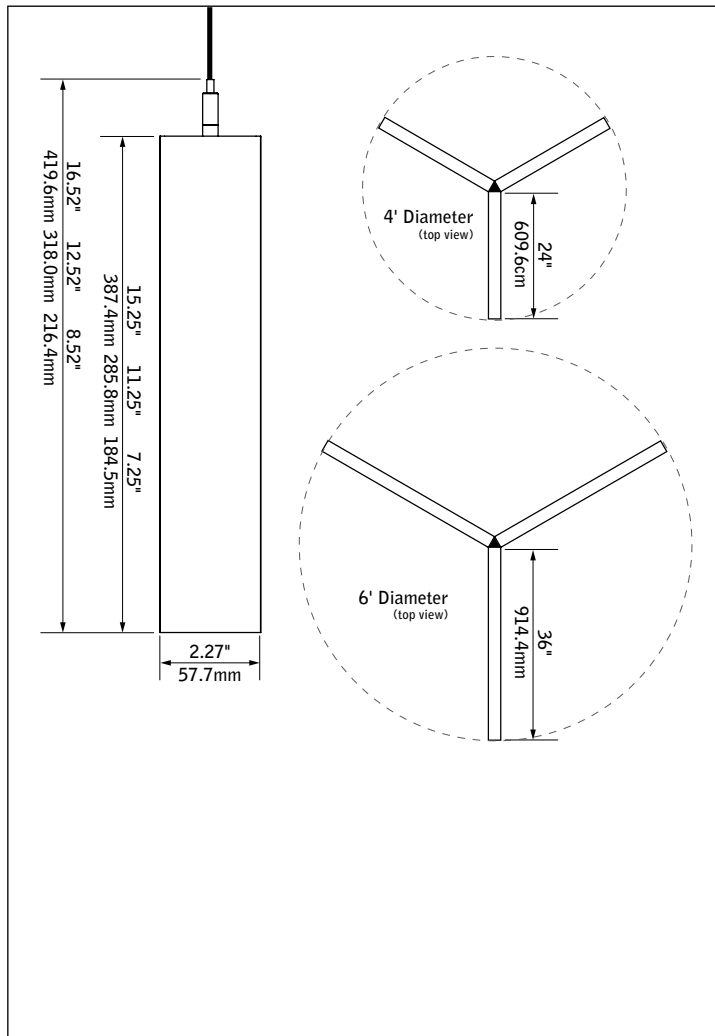


Unlit companion



Seem 1 Acoustic companion

## DIMENSIONAL DATA



## FEATURES

Narrow, sound absorbing 1.5" aperture 'Y' shaped acoustic pendant with direct distribution.

Available in 4' and 6' diameters with 8", 12", and 16" nominal housing heights.

LED position and lens material optimized to provide the perfect blend of high performance and visual comfort.

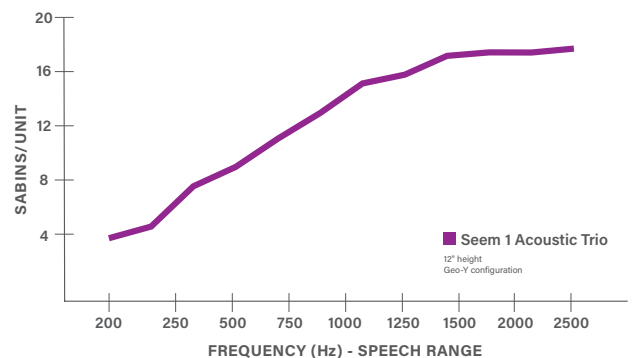
Engineered to maximize sound absorption and to create a statement as a stand-alone pendant, in a cluster or as part of a system when paired with Seem 1 Acoustic.

AirCore™, patent pending, eco-friendly technology that maximizes sound absorption and reduces ecological impact.

Wide range of color options provides design flexibility and personalization for any project.

Available in a range of curated printed finish options, including The Naturals and Cosmic.

## ACOUSTIC PERFORMANCE

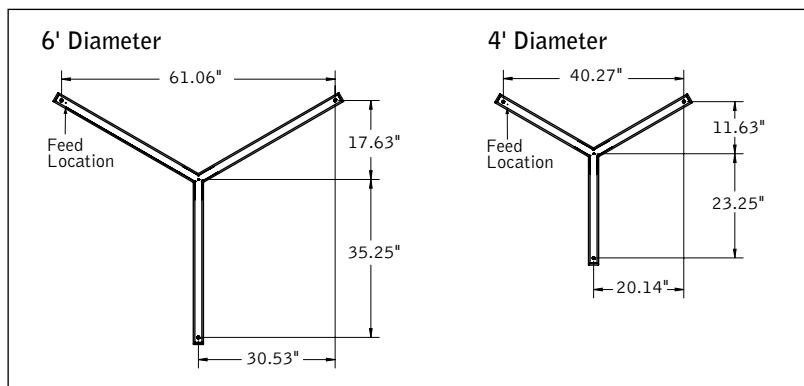


All products were tested in multiple configured arrays. Total absorption will vary based on configuration. Please refer to ASTM C423 reports for more information.

fixture:

project:

## MOUNTING DETAILS



## SPECIFICATIONS

### Acoustic Material

|                                 |  |
|---------------------------------|--|
| Content                         | Housing material is 100% polyester containing up to 50% of recycled plastic bottles (PET felt) and is moisture resistant.<br><br>See page 3 for color offering. Acoustic material colors are subject to change without notice. For the most current color options, please visit <a href="http://focalpointlights.com/acousticsolutions">focalpointlights.com/acousticsolutions</a> . Lead times may vary depending on color. |
| Cleaning and Care               | Remove dust and debris with a clean, soft, lint-free cloth or vacuum   |
| PET Thickness                   | 9mm  |
| Surface Burning Characteristics | ASTM E84 Class A / CAN ULC S102<br>Flame Spread: 0<br>Smoke Development Index: 300   |
| Colorfastness                   | AATCC 16A Option 3 Class 4 minimum at 40 hours   |

### Acoustic Performance

Acoustic testing is performed on all Focal Point acoustic products and varies based on installation and configuration. ASTM C423 test reports can be downloaded from [focalpointlights.com](http://focalpointlights.com).

Contact [acoustic.solutions@focalpointlights.com](mailto:acoustic.solutions@focalpointlights.com) for technical questions.

|        |  |
|--------|--|
| Sabins | Sabins is a unit of sound absorption. It measures how well one square foot of material absorbs sound. Focal Point has averaged the Sabins per unit at four specific frequency bands representing the human speech range (250, 500, 1000, 2000 Hz) to determine the Sabins per product.<br><br>Sabins/unit varies based on configuration:<br>Geo Y Configuration = 12.24 Sabins<br>Staggered Hex Configuration = 12.07 Sabins |
|--------|--|

### LED System

Proprietary linear LED module incorporates premium LEDs on a robust platform to achieve excellent thermal management. LEDs are placed to promote a uniform appearance. Available in 3000K, 3500K or 4000K with both 80 and 90 CRI options. LED drivers are replaceable from above. Color accuracy <3 SDCM.

### Weight

12" height, 4' diameter = 17.5lbs. 12" height, 6' diameter = 26.3lbs.

### Optic

Reflectors fabricated of 22 Ga. steel finished in Matte White powder coat. Extruded acrylic lens .05" thick with frosted finish, up to 8' continuous. 0.02" thick clear acrylic dust cover.

### Electrical

Luminaires are pre-wired with factory installed branch circuit wiring and over-molded quick connects. Standard 120-277V constant current driver includes 0-10V analog dimming. Power factor > .9. Power cord white as standard.

### Canopy

Polyester powder coat applied over a multi-stage pre-treatment. Canopy white as standard.

### Labels

UL and cUL listed. Suitable for Dry Locations, indoor use only.

### Lumen Maintenance

Reported: L70 at >61,000 hours      Calculated: L70 at 470,000 hours  
L90 at >61,000 hours      L90 at 115,000 hours

Derived from EPA TM-21 calculator. Based on typical conditions, consult factory for additional data.

### Reliability

At Focal Point, our products are designed to stand the test of time. Each luminaire is engineered using superior components, manufactured with the utmost care and rigorously tested. Contact us for reliability data.

### Warranty

LED system rated for operation in ambient environments up to 25°C. 5-year limited warranty.

## 4' PERFORMANCE CHART

See page 4

Focal Point LLC reserves the right to change specifications for product improvement without notification.

## ORDERING

### Luminaire Series

Seem 1 Acoustic Trio Direct      ASM1TP

### Nominal Size

4' Diameter      4  
6' Diameter      6

### Shielding

Regress lens      RL

### Luminaire Height

(heights are nominal)

8" nominal      8  
12" nominal      12  
16" nominal      16

### Direct Lumen Output

4' Diameter  
600 Lumens      600L  
1200 Lumens      1200L  
1800 Lumens      1800L  
2400 Lumens      2400L  
3000 Lumens      3000L  
  
6' Diameter  
900 Lumens      900L  
1800 Lumens      1800L  
2700 Lumens      2700L  
3600 Lumens      3600L  
4500 Lumens      4500L

### Color Temperature

3000K, 80CRI or 90CRI      30K or 930K  
3500K, 80CRI or 90CRI      35K or 935K  
4000K, 80CRI or 90CRI      40K or 940K

### Circuit

Single Circuit      1C

### Voltage

120/277 UNV Volt      UNV

### Control System & Dimming Level

0-10V - 10% Dimming      LD1  
0-10V - 1% Dimming      L11  
Lutron Hi-Lume EcoSystem (LDE1) -      LH1  
1% Dimming  
DALI 1% Dimming      D11

### Mounting

(Mounting hang kits ship with order. Power cable is 18" longer than suspension length.)

24" Cable Suspension      J24\_\_  
48" Cable Suspension      J48\_\_  
96" Cable Suspension      J96\_\_  
120" Cable Suspension      J120\_\_

(Specify canopy color White (WH), Black (BK) or Titanium Silver (TS). Example: J24WH.)  
(Consult factory for sloped ceiling applications)

### Factory Options

Black Cord      BKCD

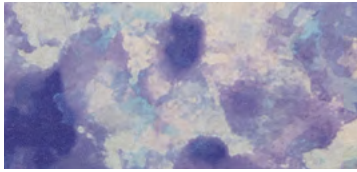
### Acoustic Panel Color

See page 3 for color offering  
(Consult factory for multi-colored units)

# Acoustic Materials



## COSMIC (25% SCALE)



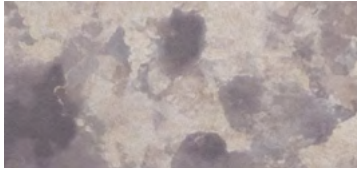
BLUE STAR

BSR



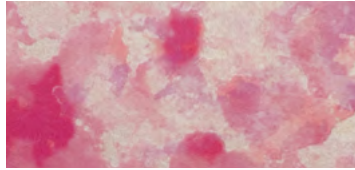
GREEN QUASAR

GQR



MOON ROCK

MRK



PINK NEBULA

PPN



SOLAR FLARE

SRF

## THE NATURALS (25% SCALE)



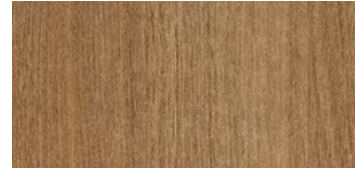
LIGHT OAK

LOK



GRAY ELM

GRE



CHESTNUT

CHT



WALNUT

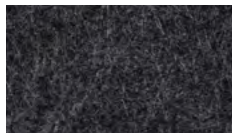
WLT

## STANDARD PET



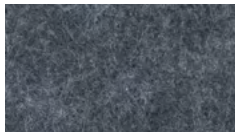
PURE BLACK

PBK



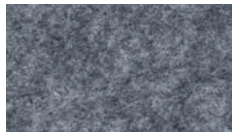
CHARCOAL GRAY

CHG



SLATE

SLT



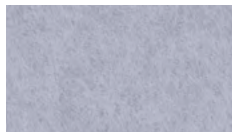
SHADOW GRAY

SDG



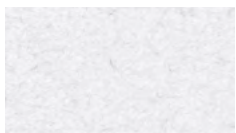
SILVER GRAY

SLG



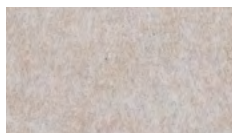
PEARL ICE

PIC



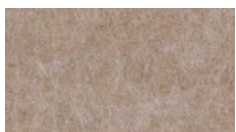
CLASSIC WHITE

CWH



NATURAL LINEN

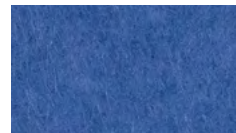
NTL



HAZELWOOD

HZW

## PREMIUM PET



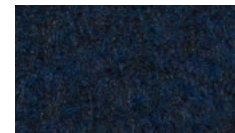
CORNFLOWER BLUE

CFB



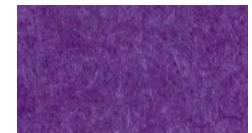
DENIM BLUE

DNB



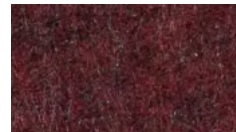
MIDNIGHT BLUE

MNB



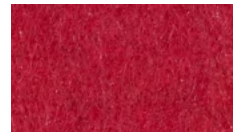
DEEP PURPLE

DPP



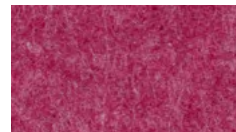
BRICK RED

BRD



CHERRY RED

CHR



BERRY

BRY



BLUSH

BLS



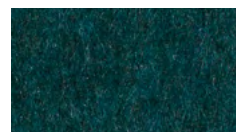
CARROT

CRT



PINEAPPLE

PNA



DEEP WATER

DWT



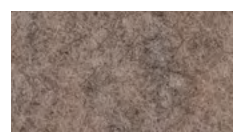
SEAFOAM

SFM



EMERALD GREEN

EMG



LIMESTONE

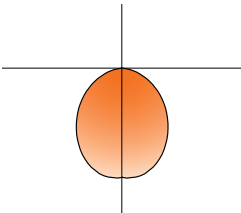
LMS

Slight color variations are inherent to the PET felt manufacturing process. Color renditions on screens vary due to display settings and lighting conditions.

Order samples at [focalpointlights.com/Samples](https://focalpointlights.com/Samples)



4' DIAMETER PERFORMANCE CHART

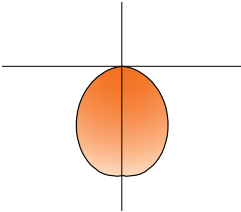


Photometric performance is measured in accordance with IESNA LM-79. Visit focalpointlights.com for complete photometric data.

| Delivered Lumens | Tested System Watts | LPW |
|------------------|---------------------|-----|
| 600              | 7.2                 | 85  |
| 1200             | 12.5                | 98  |
| 1800             | 17.9                | 101 |
| 2400             | 24.2                | 102 |
| 3000             | 30.2                | 100 |

\*Based on 3500k, 80CRI, 4' lengths. Lumen multipliers: 90 CRI = 0.87. Lumen output may vary +/- 5%. Actual wattage may vary +/- 5%.

6' DIAMETER PERFORMANCE CHART



Photometric performance is measured in accordance with IESNA LM-79. Visit focalpointlights.com for complete photometric data.

| Delivered Lumens | Tested System Watts | LPW |
|------------------|---------------------|-----|
| 900              | 9.0                 | 103 |
| 1800             | 15.9                | 114 |
| 2700             | 23.4                | 116 |
| 3600             | 31.7                | 114 |
| 4500             | 40.0                | 113 |

\*Based on 3500k, 80CRI, 4' lengths. Lumen multipliers: 90 CRI = 0.87. Lumen output may vary +/- 5%. Actual wattage may vary +/- 5%.