

Seem® 1 Acoustic

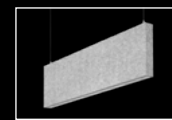
LED INDIRECT



90° corner detail



'L' pattern



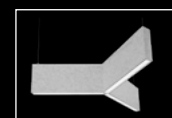
Seem 1 Acoustic
Unlit companion



The Naturals collection - Light Oak shown
Cosmic Collection - Blue Sky shown

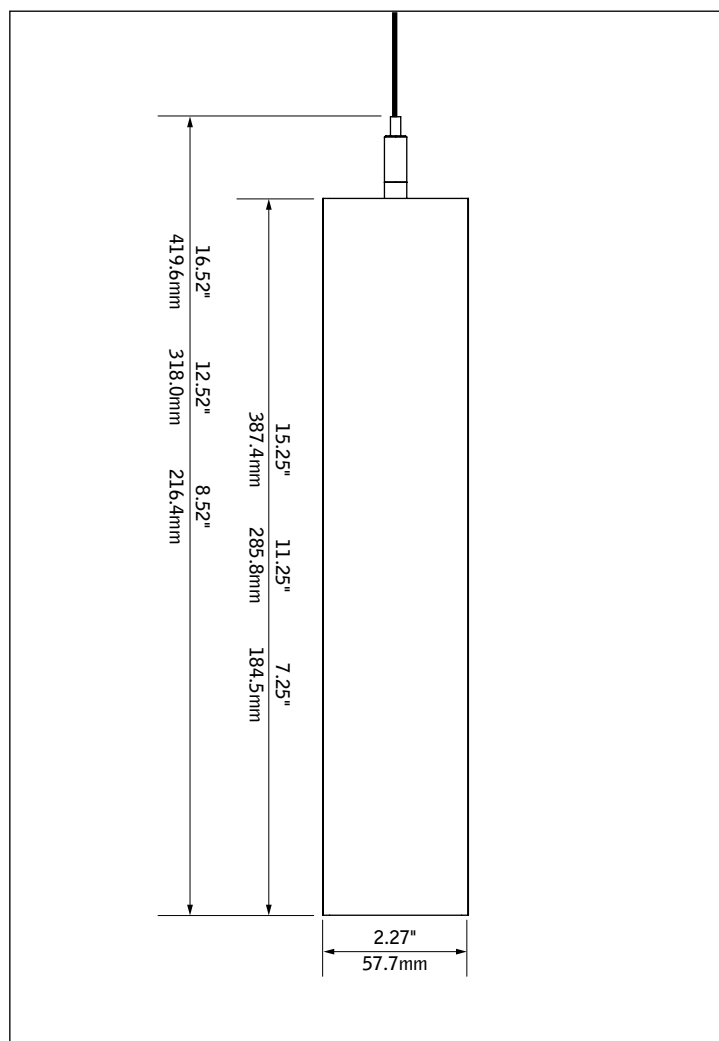


AirCore Blade
companion



Seem 1 Acoustic
Trio companion

DIMENSIONAL DATA



FEATURES

Narrow, sound absorbing 1.5" aperture linear indirect acoustic LED luminaire.

Available in 3' to 208' lengths in 1" increments with 8", 12" or 16" nominal housing heights. in straight lengths or patterns with 90° corners.

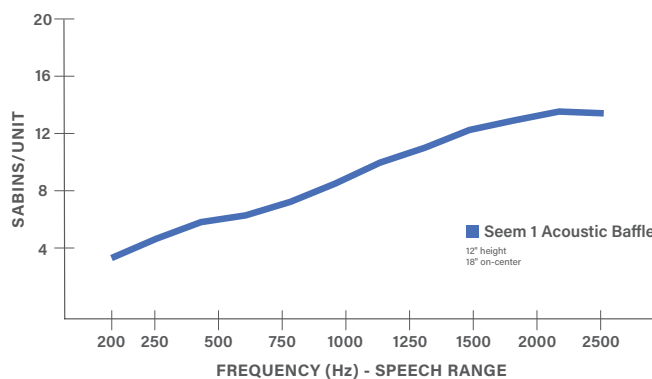
Indirect batwing optic allows for wide on-center spacing while maintaining ceiling uniformity.

AirCore® Technology: patented, eco-friendly technology that maximizes sound absorption and reduces ecological impact.

Pair with Seem 1 Acoustic unlit baffle, Seem 1 Acoustic Trio, AirCore Blade®, or TruBlade® to create a coordinated look in interior spaces.

Available in a range of curated printed finish options, including The Naturals and Cosmic.

ACOUSTIC PERFORMANCE

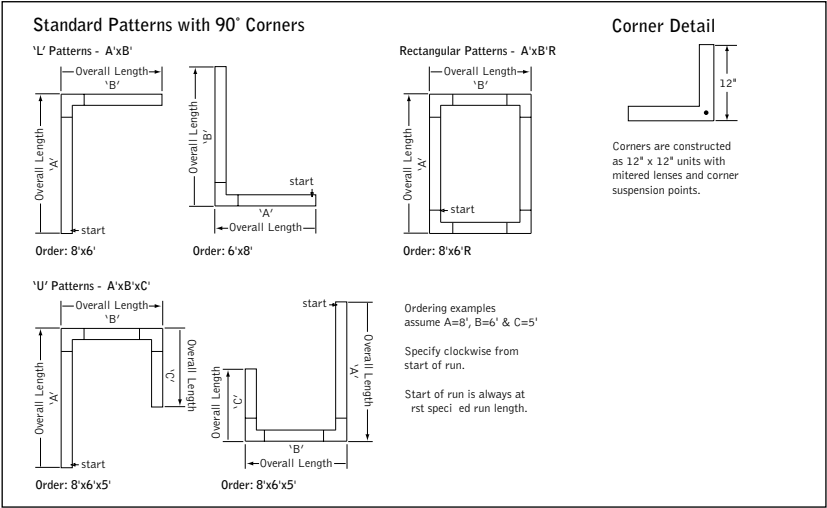


All products were tested in multiple configured arrays. Total absorption will vary based on configuration. Please refer to ASTM C423 reports for more information.

fixture:

project:

DETAILS



SPECIFICATIONS

Acoustic Material

Content	Housing material is 100% polyester containing up to 50% of recycled plastic bottles (PET felt) and is moisture resistant. See page 3 for color offering. Acoustic material colors are subject to change without notice. For the most current color options, please visit focalpointlights.com/acousticsolutions. Lead times may vary depending on color.
Cleaning and Care	Remove dust and debris with a clean, soft, lint-free cloth or vacuum
PET Thickness	9mm
Surface Burning Characteristics	ASTM E84 Class A / CAN ULC S102
Flame Spread	0, Smoke Development Index: 300
Colorfastness	AATCC 16A Option 3 Class 4 minimum at 40 hours

Acoustic Performance

Acoustic testing is performed on all Focal Point acoustic products and varies based on installation and configuration. ASTM C423 test reports can be downloaded from focalpointlights.com. Contact acoustic.solutions@focalpointlights.com for technical questions.

Sabins	Sabins is a unit of sound absorption. It measures how well one square foot of material absorbs sound. Focal Point has averaged the Sabins per unit at four specific frequency bands representing the human speech range (250, 500, 1000, 2000 Hz) to determine the Sabins per product. 8' length, 12" height: 12" OC = 5.08 Sabins, 18" OC = 9.05 Sabins, 24" OC = 9.46 Sabins
--------	---

LED System

Proprietary linear LED module incorporates premium LEDs on a robust platform to achieve excellent thermal management. LEDs are placed to promote a uniform appearance. Available in 2700K, 3000K, 3500K or 4000K with both 80 and 90 CRI options. LED drivers are replaceable from above. Color accuracy <3 SDCM.

Weight

12" height, 4' length = 10.75lbs. 12" height, 6' length = 16.13lbs. 12" height, 8' length = 21.5lbs.

Optic

Reflector fabricated of 22 Ga. steel finished in Matte White powder coat. 0.02" thick clear acrylic dust cover.

Mounting

Minimum mounting height 7.5" from the ceiling.

Electrical

Luminaires are pre-wired with factory installed branch circuit wiring and over-molded quick connects. Standard 120-277V constant current driver includes 0-10V analog dimming. Power factor > .9. Power cord white as standard.

Canopy

Polyester powder coat applied over a multi-stage pre-treatment. Canopy white as standard.

Labels

UL and cUL listed. Suitable for Dry Locations, indoor use only.

Lumen Maintenance

Reported: L70 at >61,000 hours Calculated: L70 at 470,000 hours
L90 at >61,000 hours L90 at 115,000 hours

Derived from EPA TM-21 calculator. Based on typical conditions, consult factory for additional data.

Reliability

At Focal Point, our products are designed to stand the test of time. Each luminaire is engineered using superior components, manufactured with the utmost care and rigorously tested. Contact us for reliability data.

Warranty

LED system rated for operation in ambient environments up to 25°C and when mounted no less than 7.5" from the ceiling. 5-year limited warranty.

4' PERFORMANCE CHART

See page 4

Focal Point LLC reserves the right to change specifications for product improvement without notification.

ORDERING

Luminaire Series

Seem 1 Acoustic Indirect LED ASM1S

Shielding

Batwing Top/Solid Bottom BWSL

Dust Cover Top/Solid Bottom DCSD

Luminaire Height

(heights are nominal)

8" 8
12" 12
16" 16

Lumen Output

125 Lumens per foot 125LF
(4' minimum. Consult factory for Lutron & DALI)
250 Lumens per foot 250LF
375 Lumens per foot 375LF
500 Lumens per foot 500LF
625 Lumens per foot 625LF
800 Lumens per foot 800LF

Color Temperature

2700K, 80CRI or 90CRI 27K or 927K
3000K, 80CRI or 90CRI 30K or 930K
3500K, 80CRI or 90CRI 35K or 935K
4000K, 80CRI or 90CRI 40K or 940K

Circuit

Single Circuit 1C

Voltage

120/277 UNV Volt UNV

Control System & Dimming Level

0-10V - 10% Dimming LD1
0-10V - 1% Dimming L11
Lutron Hi-Lume EcoSystem (LDE1) - 1% Dimming LH1
DALI 1% Dimming D11

Mounting

(Mounting hang kits ship with order. Power cable is 18" longer than suspension length.)

24" Cable Suspension J24_

48" Cable Suspension J48_

96" Cable Suspension J96_

120" Cable Suspension J120_

(Specify canopy color White (WH), Black (BK) or Titanium Silver (TS). Example: J24WH.)
(Consult factory for sloped ceiling applications)

Factory Options

Black Cord BKCD

Acoustic Panel Color

See page 3 for color offering

Luminaire Length

(Leave blank for patterns. Luminaires are 3/4" longer than specified and cannot be cut to length or joined in the field.)

Specify length in 1" increments from 3' to 208' _ft _in

(Consult factory for alternate lengths.)

Pattern Options

(Patterns available with LD1 and L11 drivers only.)
(5' minimum leg length for L patterns.
6' minimum leg length for U and Rectangle patterns)

'L' pattern A' x B'

'U' pattern A' x B' x C'

Rectangular pattern A' x B' R

(Consult factory for other pattern options)



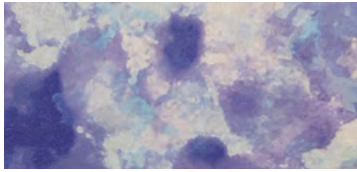
10 DAY

Options in orange qualify for the Quickship program. Five color options. Available in 4', 6', 8', 10', 12', 14', 16' lengths. Maximum linear feet is 200' of acoustic products per order. Refer to Quickship Guide for complete details.

Acoustic Materials



COSMIC (25% SCALE)



BLUE STAR

BSR



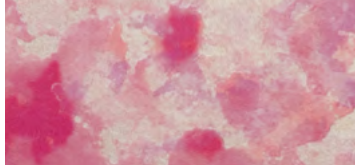
GREEN QUASAR

GQR



MOON ROCK

MRK



PINK NEBULA

PPN



SOLAR FLARE

SRF

THE NATURALS (25% SCALE)



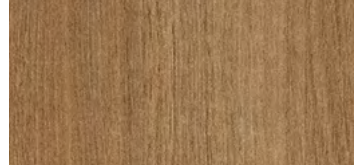
LIGHT OAK

LOK



GRAY ELM

GRE



CHESTNUT

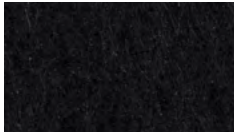
CHT



WALNUT

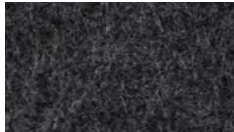
WLT

STANDARD PET



PURE BLACK

PBK



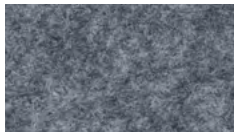
CHARCOAL GRAY

CHG



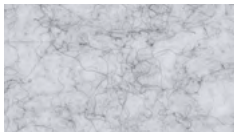
SLATE

SLT



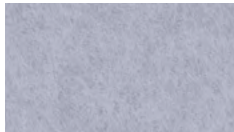
SHADOW GRAY

SDG



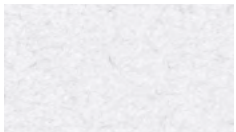
SILVER GRAY

SLG



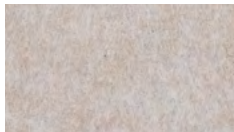
PEARL ICE

PIC



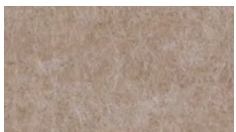
CLASSIC WHITE

CWH



NATURAL LINEN

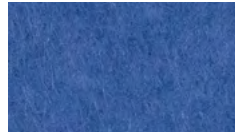
NTL



HAZELWOOD

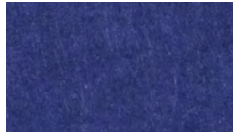
HZW

PREMIUM PET



CORNFLOWER BLUE

CFB



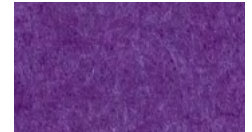
DENIM BLUE

DNB



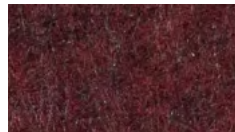
MIDNIGHT BLUE

MNB



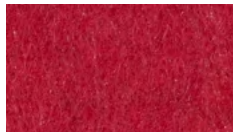
DEEP PURPLE

DPP



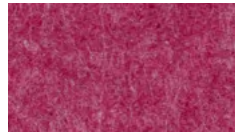
BRICK RED

BRD



CHERRY RED

CHR



BERRY

BRY



BLUSH

BLS



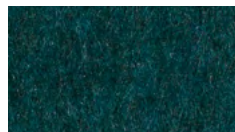
CARROT

CRT



PINEAPPLE

PNA



DEEP WATER

DWT



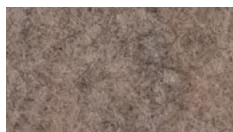
SEAFOAM

SFM



EMERALD GREEN

EMG



LIMESTONE

LMS

Slight color variations are inherent to the PET felt manufacturing process. Color renditions on screens vary due to display settings and lighting conditions.

Order samples at focalpointlights.com/Samples

Declare.

PET
Focal Point, LLC

Final Assembly: Chicago, Illinois, USA

Life Expectancy: 30 Year(s)

End of Life Options: Salvageable/Reusable in its Entirety, Recyclable (100%)

Ingredients:

Polyethylene terephthalate: PET; N, N'-Ethylene bisstearamide: Octadecanamide, N,N'-1,2-ethanediylbis-; Stearic Acid: Stearic Acid; Antioxidant 1076: Benzenepropanoic acid, 3,5-bis(1,1-dimethylethyl)-4-hydroxy-, octadecyl ester; Antioxidant KY-405: Benzenamine, 4-(1-methyl-1-phenylethyl)-N-[4-(1-methyl-1-phenylethyl)phenyl]-; Titanium Dioxide: Titanium dioxide

Living Building Challenge Criteria:

I-13 Red List:

■ LBC Red List Free % Disclosed: 100% at 100ppm
□ LBC Red List Approved VOC Content: Not Applicable
□ Declared

I-10 Interior Performance: Not Compliant

I-14 Responsible Sourcing: Not Applicable


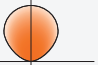
FPL-0001

EXP. 01 JUN 2026

Original Issue Date: 2020

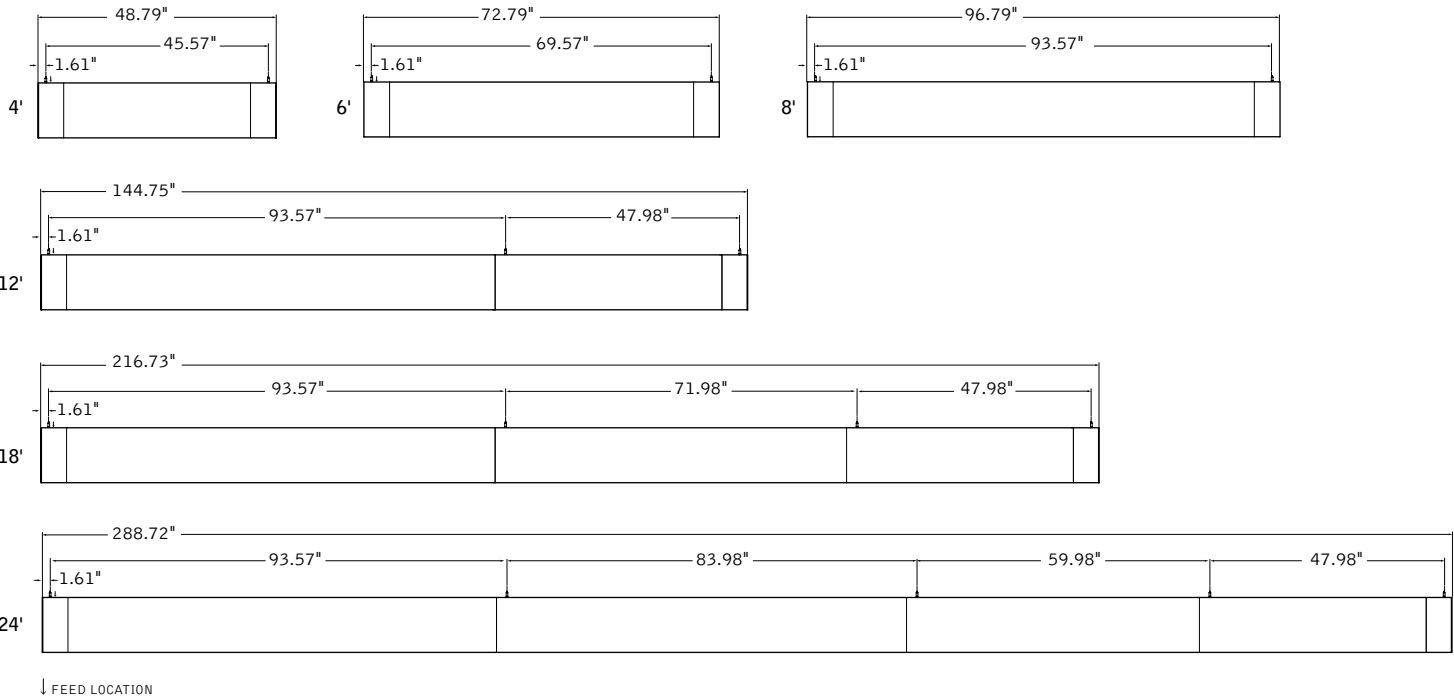
FOCAL POINT LIGHTS IS A MEMBER OF THE INTERNATIONAL LIVING FUTURE INSTITUTE™ living-future.org/declare/

4' PERFORMANCE CHART

Indirect Lumen Output	Delivered Lumens	Tested System Watts	Lumens per Watt (LPW)	
			 BW	 DC
125LF	500	7	91	96
250LF	1000	8	118	123
375LF	1500	12	130	130
500LF	2000	15	134	134
625LF	2500	18	136	136
800LF	3200	24	133	133

Based on 3500k, 80CRI, 4' lengths. 90 CRI Lumen multiplier = 0.87. Lumen output may vary +/- 5%. Actual wattage may vary +/- 5%

MOUNTING DETAILS



RUN CHART

Run length (ft)	Housing Configuration Section Lengths	# of hang points per run	Run length (ft)	Housing Configuration Section Lengths	# of hang points per run
9	5 + 4	3	29	8 + 7 + 7 + 7	5
10	6 + 4	3	30	8 + 7 + 7 + 8	5
11	7 + 4	3	31	8 + 7 + 7 + 5 + 4	6
12	8 + 4	3	32	8 + 7 + 7 + 6 + 4	6
13	8 + 5	3	33	8 + 7 + 7 + 7 + 4	6
14	8 + 6	3	34	8 + 7 + 7 + 7 + 5	6
15	8 + 7	3	35	8 + 7 + 7 + 7 + 6	6
16	8 + 8	3	36	8 + 7 + 7 + 7 + 7	6
17	8 + 5 + 4	4	37	8 + 7 + 7 + 7 + 8	6
18	8 + 6 + 4	4	38	8 + 7 + 7 + 7 + 5 + 4	7
19	8 + 7 + 4	4	39	8 + 7 + 7 + 7 + 6 + 4	7
20	8 + 7 + 5	4	40	8 + 7 + 7 + 7 + 7 + 4	7
21	8 + 7 + 6	4	41	8 + 7 + 7 + 7 + 7 + 5	7
22	8 + 7 + 7	4	42	8 + 7 + 7 + 7 + 7 + 6	7
23	8 + 7 + 8	4	43	8 + 7 + 7 + 7 + 7 + 7	7
24	8 + 7 + 5 + 4	5	44	8 + 7 + 7 + 7 + 7 + 8	7
25	8 + 7 + 6 + 4	5	45	8 + 7 + 7 + 7 + 7 + 5 + 4	8
26	8 + 7 + 7 + 4	5	46	8 + 7 + 7 + 7 + 7 + 6 + 4	8
27	8 + 7 + 7 + 5	5	47	8 + 7 + 7 + 7 + 7 + 7 + 4	8
28	8 + 7 + 7 + 6	5	48	8 + 7 + 7 + 7 + 7 + 7 + 5	8

Ordering Guide

Indirect Only Linear Circuitry, Zones & Factory Options

HOW TO USE THIS GUIDE

Fill out the worksheet on the following page to specify your requirements for circuitry, zones, and factory options.

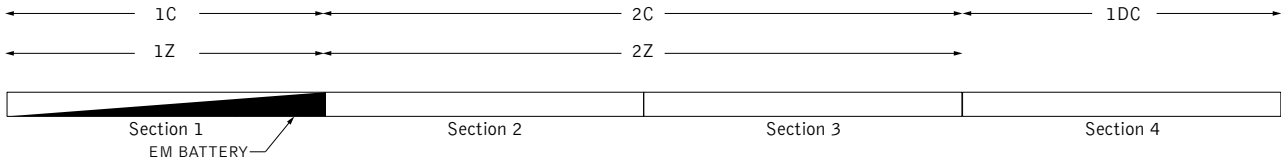
Refer to the run chart for standard run configurations, consult factory for custom configurations.

Complete the Totals / Ordering Codes at the bottom of the worksheet and add to your ordering logic on the cut sheet.

Submit the worksheet along with your order.

EXAMPLE	TOTAL RUN LENGTH: 32ft		JOB NAME:			FIXTURE TYPE:		
	HOUSING SECTION	SECTION LENGTH	SHARED ELECTRICAL FEED, NORMAL POWER			FACTORY OPTIONS		
						SEPARATE ELECTRICAL FEEDS		EM
			SWITCHING CIRCUIT	DIMMING ZONE	DAYLIGHT ZONE	DAYLIGHT CIRCUIT	AUXILIARY CIRCUIT	
	1	8	1C	1Z				1EM
2	8	2C	2Z					
3	8	2C	2Z					
4	8				1DC			
Totals / Ordering Codes		2C	2Z		1DC		1EM	

ORDERING: FSM1IS-DC-625LF-35K- 2C2Z -UNV-LD1-C24WH- 1DC-1EM -WH-32ft



KEY

C = Switching Circuit
Switched Hot / Shared Neutral

Z = Dimming Zone
Dimming Control Wires

DL = Daylight Zone
Daylight Dimming Control Wires

DC = Daylight Circuit
Switched Hot / Separate Neutral

EC = Auxiliary Circuit Switched
Hot / Separate Neutral

EM = Backup Battery Pack
Unswitched Hot / Shared Neutral

ECD = Emergency Control Device
Unswitched Hot / Separate Neutral

DEFAULTS

- Zones and Factory Options illuminate entire sections from 4' to 8' in length.
- One shared or isolated circuit and zone required per housing section.
- Limit of one EM or ECD per housing section.
- Additional electrical feed required for applications greater than three shared circuits and zones.
- Each DC, EC and ECD require an additional electrical feed.
- ECD not available in the same housing section as EC.
- Longer lead times and additional pricing may apply for custom run configurations.

CUSTOM LENGTHS

- If partial illumination of emergency or daylight section is required, indicate in ordering guide and add "partial illumination" in Order Notes. Drawing required.
- Engineering validation required, longer lead times may apply.

Ordering Guide Worksheet

Linear Circuitry, Zones & Factory Options

WORKSHEET	TOTAL RUN LENGTH: _____		JOB NAME: _____			FIXTURE TYPE: _____			
	HOUSING SECTION	SECTION LENGTH	SHARED ELECTRICAL FEED, NORMAL POWER			FACTORY OPTIONS			
			SWITCHING CIRCUIT	DIMMING ZONE	DAYLIGHT ZONE	SEPARATE ELECTRICAL FEEDS		EM	
	DAYLIGHT CIRCUIT	AUXILIARY CIRCUIT				ECD			
	1								
	2								
	3								
	4								
	5								
	6								
7									
8									
9									
10									
11									
12									
13									
14									
15									
16									
17									
18									
19									
20									
Totals / Ordering Codes									

Combine to create Circuits & Zones ordering code

Enter as individual Factory Options

RUN CHART

Run length (ft)	Housing Configuration Section Lengths	Run length (ft)	Housing Configuration Section Lengths	Run length (ft)	Housing Configuration Section Lengths	Run length (ft)	Housing Configuration Section Lengths
9	5 + 4	21	8 + 8 + 5	33	8 + 8 + 8 + 5 + 4	45	8 + 8 + 8 + 8 + 8 + 5
10	6 + 4	22	8 + 8 + 6	34	8 + 8 + 8 + 6 + 4	46	8 + 8 + 8 + 8 + 8 + 6
11	7 + 4	23	8 + 8 + 7	35	8 + 8 + 8 + 7 + 4	47	8 + 8 + 8 + 8 + 8 + 7
12	8 + 4	24	8 + 8 + 8	36	8 + 8 + 8 + 8 + 4	48	8 + 8 + 8 + 8 + 8 + 8
13	8 + 5	25	8 + 8 + 5 + 4	37	8 + 8 + 8 + 8 + 5		
14	8 + 6	26	8 + 8 + 6 + 4	38	8 + 8 + 8 + 8 + 6		
15	8 + 7	27	8 + 8 + 7 + 4	39	8 + 8 + 8 + 8 + 7		
16	8 + 8	28	8 + 8 + 8 + 4	40	8 + 8 + 8 + 8 + 8		
17	8 + 5 + 4	29	8 + 8 + 8 + 5	41	8 + 8 + 8 + 8 + 5 + 4		
18	8 + 6 + 4	30	8 + 8 + 8 + 6	42	8 + 8 + 8 + 8 + 6 + 4		
19	8 + 7 + 4	31	8 + 8 + 8 + 7	43	8 + 8 + 8 + 8 + 7 + 4		
20	8 + 8 + 4	32	8 + 8 + 8 + 8	44	8 + 8 + 8 + 8 + 8 + 4		

Standard run configurations, consult factory for custom configurations.