

Mora®

INTEGRATED ACOUSTIC CEILING AND LIGHTING SYSTEM



MORA BUILD



Mora Build literally offers the building blocks to your next acoustic ceiling. The two standard designs of Arch and Wave are available in nominal square modules from 4 to 8 feet, lit or unlit. Several modules can be combined over large surface areas, resulting in rhythmic and playful ceilings.

[Go to Mora Build Arch](#)

[Go to Mora Build Wave](#)

MORA CREATE



Mora Create gives you the freedom to design custom-sized arrays to fit the exact dimensions of your room using three designs: Alpine, Radiate, or Ripple. Each offers a singular visual aesthetic and allows for placement of the continuous luminaires to fulfill the lighting requirements of the space.

[Go to Mora Create](#)

MORA INSPIRE



Let your imagination run wild with the support of our design and engineering team. We will turn your inspiration into a showpiece ceiling.

Contact us at
acoustic.solutions@focalpointlights.com
to discuss your project.

Mora® Build Arch

INTEGRATED ACOUSTIC CEILING AND LIGHTING SYSTEM

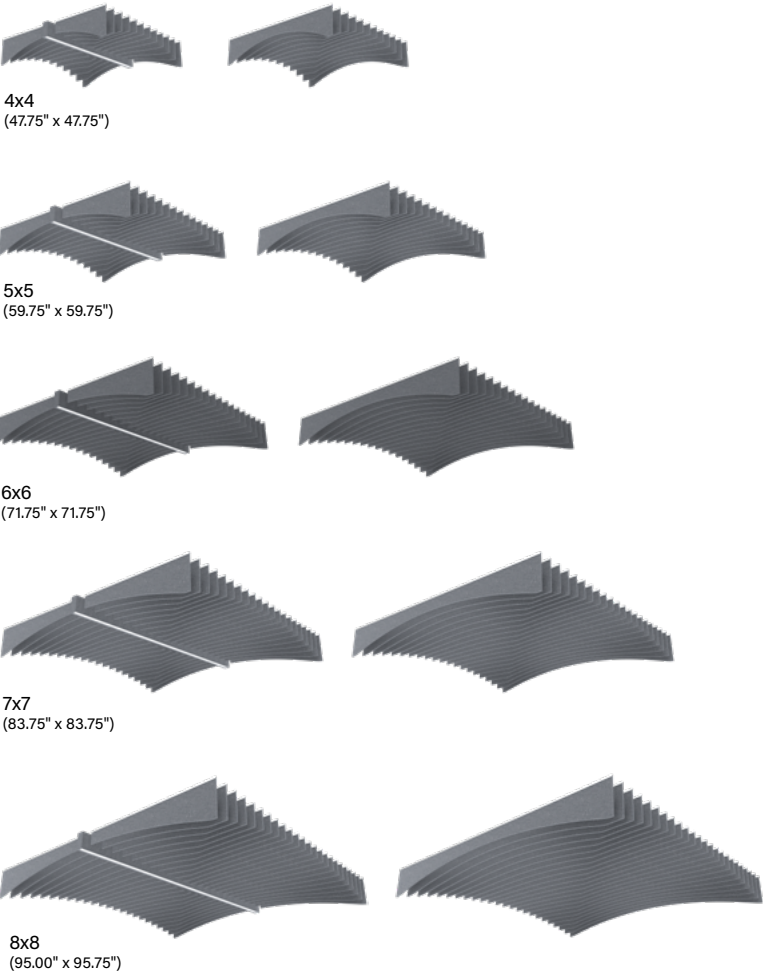


SYSTEM FEATURES

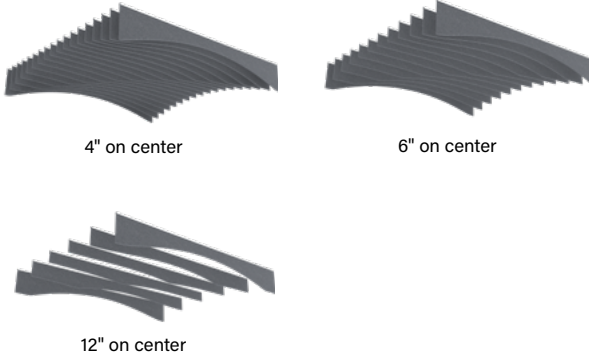
- Mora combines TruBlade® slim, 9mm thick, sound absorbing acoustic baffles with optional Seem® 1 Acoustic luminaires.
- Nominal square modules from 4 to 8 feet.
- TruBlade's top aluminum extrusion optimizes stability and straightness.
- Blade spacing of 4" , 6" or 12" on center.
- Combine A & B style modules to create patterns.
- Seem 1 Acoustic luminaires feature AirCore® patent pending, eco-friendly technology that maximizes sound absorption and reduces ecological impact.
- Frosted acrylic lens provides uninterrupted illumination, without pixels or shadows.
- Choice of lumen output levels to meet a wide variety of application needs.
- Available in a range of curated printed finish options, including The Naturals and Cosmic.

MODULE DETAILS

Module Sizes (4" on center blade spacing shown)



Blade Spacing (6x6 modules shown)



On-center Luminaire Spacing & Module Compatibility

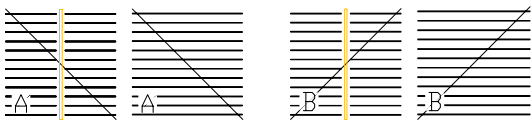

Use the table below to determine suitable module sizes based on the desired on-center spacing of the luminaires.

LIT AND UNLIT MODULE CONFIGURATIONS	MODULE SIZE				
	4x4	5x5	6x6	7x7	8x8
	On-center luminaire spacing				
	4ft	5ft	6ft	7ft	8ft
	8ft	10ft	12ft	14ft	16ft
	12ft	15ft	18ft		
	16ft				

STYLES

Arch A (AHA)

Arch B (AHB)



The sequence of the baffles is reversed for A and B styles, yielding a totally different visual effect. Use each individually or mix and match A and B style modules to create unique ceilings.

PATTERN INSPIRATIONS



Arch
'Zig-Zag'
Pattern



4x4 modules, 6" blade spacing, A & B styles



Arch
'A' Pattern



8x8 modules, 4" blade spacing, all A style



Arch 'B' Pattern

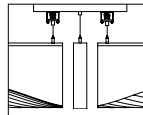
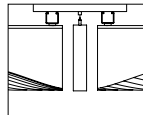
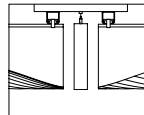
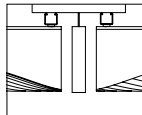
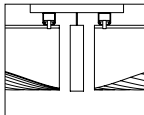


Arch 'Chevron' Pattern



Arch 'Argyle' Pattern

SYSTEM MOUNTING



DTSKDTSMCSKCSM24CS

See page 8 for strut recommendations.

LIT SYSTEM ORDERING

System Series	AMR
Mora Build	AMR
Style	
Arch A	AHA
Arch B	AHB
Acoustic Panel Color	
See page 10 for color offering	
Size (nominal)	
4' x 4'	44
5' x 5'	55
6' x 6'	66
7' x 7'	77
8' x 8'	88
Blade Spacing	
4" on center	40C
6" on center	60C
12" on center	120C
(6 x 6, 7 x 7 and 8 x 8 sizes only)	
System Mounting	
Direct to Strut Luminaires and StrutKlip Baffles	DTSK
Direct to Strut Luminaires and Direct to Strut Magnet baffles	DTSM
Cable Suspension Luminaires and StrutKlip baffles	CSK
Cable Suspension Luminaires and Direct to Strut Magnet baffles	CSM
Cable Suspension Luminaires and Baffles (24" length)	24CS
Luminaire Series	ASM1S
Seem 1 Acoustic	ASM1S
Shielding	
Batwing Lens	BW
Regress Lens	RL
Height	6
6" Nominal	
Lumen Output	
100 Lumens per foot (Consult factory for Lutron, DALI)	100LF
200 Lumens per foot	200LF
300 Lumens per foot	300LF
400 Lumens per foot	400LF
500 Lumens per foot	500LF
Color Temperature	
3000K, 80CRI or 90 CRI	30K or 930K
3500K, 80CRI or 90 CRI	35K or 935K
4000K, 80CRI or 90 CRI	40K or 940K
Circuits & Zones	1C
1 Circuit	
Voltage	UNV
120/277 UNV Volt	
Control System & Dimming Level	
0-10V - 10% Dimming	LD1
0-10V - 1% Dimming	L11
Lutron Hi-Lume EcoSystem (LDE1) - 1% Dimming	LH1
DALI 1% Dimming	D11
Factory Options	
Black Cord	BKCD
Emergency Circuit	_EC
Emergency Battery Pack	_EM

UNLIT SYSTEM ORDERING

System Series	AUMR
Mora Build unlit	AUMR
Style	
Arch A	AHA
Arch B	AHB
Acoustic Panel Color	
See page 10 for color offering	
Size (nominal)	
4' x 4'	44
5' x 5'	55
6' x 6'	66
7' x 7'	77
8' x 8'	88
Blade Spacing	
4" on center	40C
6" on center	60C
12" on center	120C
(6 x 6, 7 x 7 and 8 x 8 sizes only)	
System Mounting	
Direct to Strut: StrutKlip	DTSK
Direct to Strut: Magnet	DTSM
Cable Suspension (24" length)	24CS

Mora® Build Wave

INTEGRATED ACOUSTIC CEILING AND LIGHTING SYSTEM

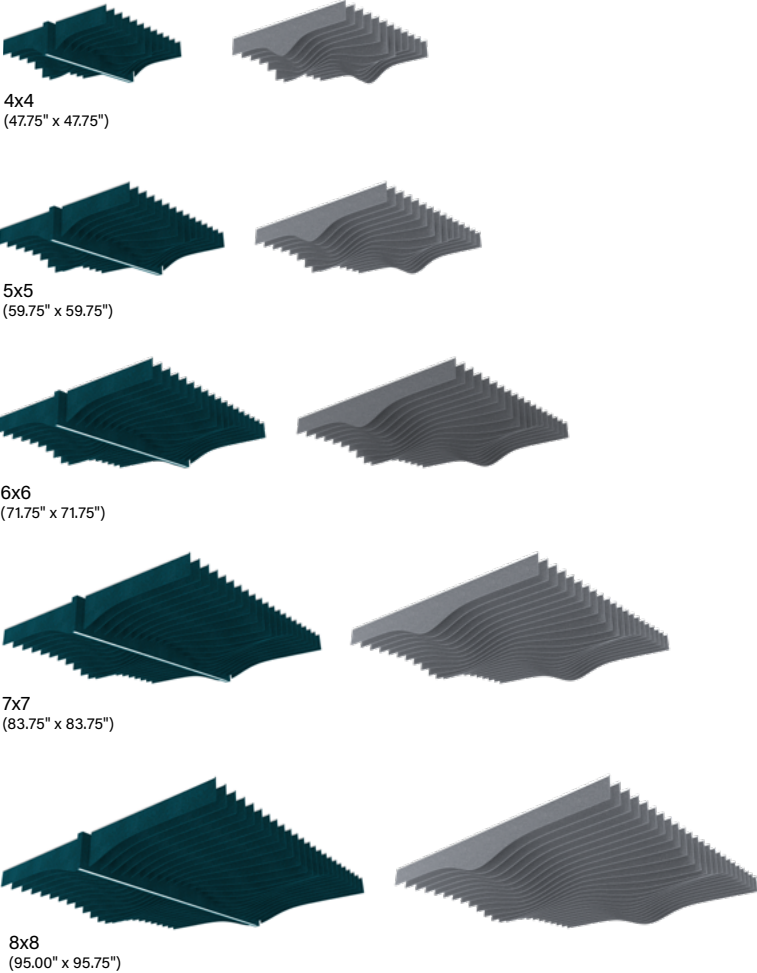


SYSTEM FEATURES

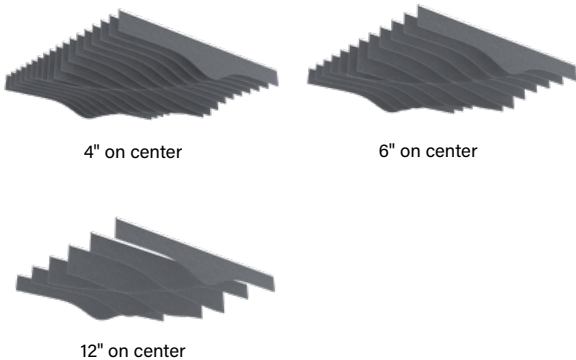
- Mora combines TruBlade® slim, 9mm thick, sound absorbing acoustic baffles with optional Seem® 1 Acoustic luminaires.
- Nominal square modules from 4 to 8 feet.
- TruBlade's top aluminum extrusion optimizes stability and straightness.
- Blade spacing of 4" , 6" or 12" on center.
- Combine A & B style modules to create patterns.
- Seem 1 Acoustic luminaires feature AirCore® patent pending, eco-friendly technology that maximizes sound absorption and reduces ecological impact.
- Frosted acrylic lens provides uninterrupted illumination, without pixels or shadows.
- Choice of lumen output levels to meet a wide variety of application needs.
- Available in a range of curated printed finish options, including The Naturals and Cosmic.

MODULE DETAILS

Module Sizes (4" on center blade spacing shown)



Blade Spacing (6x6 modules shown)



On-center Luminaire Spacing & Module Compatibility

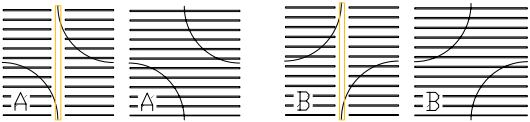

Use the table below to determine suitable module sizes based on the desired on-center spacing of the luminaires.

LIT AND UNLIT MODULE CONFIGURATIONS	MODULE SIZE				
	4x4	5x5	6x6	7x7	8x8
	On-center luminaire spacing				
	4ft	5ft	6ft	7ft	8ft
	8ft	10ft	12ft	14ft	16ft
	12ft	15ft	18ft		
	16ft				

STYLES

Wave A (WVA)

Wave B (WVB)



The sequence of the baffles is reversed for A and B styles, yielding a totally different visual effect. Use each individually or mix and match A and B style modules to create unique ceilings.

PATTERN INSPIRATIONS



Wave 'Circle' Pattern



5x5 modules, 4" blade spacing, A & B styles, with 2" module spacing



Wave 'B' Pattern



6x6 modules, 6" blade spacing, All B style



Wave 'A' Pattern

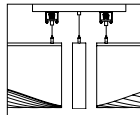
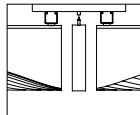
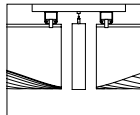
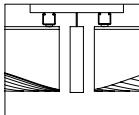
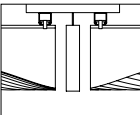


Wave 'Organic' Pattern



Wave 'S' Pattern

SYSTEM MOUNTING



DTSK DTSM CSK CSM 24CS

See page 8 for strut recommendations.

LIT SYSTEM ORDERING

System Series	AMR
Mora Build	AMR
Style	
Wave A	WVA
Wave B	WVB
Acoustic Panel Color	
See page 10 for color offering	
Size (nominal)	
4' x 4'	44
5' x 5'	55
6' x 6'	66
7' x 7'	77
8' x 8'	88
Blade Spacing	
4" on center	40C
6" on center	60C
12" on center	120C
(6 x 6, 7 x 7 and 8 x 8 sizes only)	
System Mounting	
Direct to Strut Luminaires and StrutKlip Baffles	DTSK
Direct to Strut Luminaires and Direct to Strut Magnet baffles	DTSM
Cable Suspension Luminaires and StrutKlip baffles	CSK
Cable Suspension Luminaires and Direct to Strut Magnet baffles	CSM
Cable Suspension Luminaires and Baffles (24" length)	24CS
Luminaire Series	ASM1S
Seem 1 Acoustic	ASM1S
Shielding	
Batwing Lens	BW
Regress Lens	RL
Height	12
12" Nominal	
Lumen Output	
100 Lumens per foot (Consult factory for Lutron, DALI)	100LF
200 Lumens per foot	200LF
300 Lumens per foot	300LF
400 Lumens per foot	400LF
500 Lumens per foot	500LF
Color Temperature	
3000K, 80CRI or 90 CRI	30K or 930K
3500K, 80CRI or 90 CRI	35K or 935K
4000K, 80CRI or 90 CRI	40K or 940K
Circuits & Zones	1C
1 Circuit	
Voltage	UNV
120/277 UNV Volt	
Control System & Dimming Level	
0-10V - 10% Dimming	LD1
0-10V - 1% Dimming	L11
Lutron Hi-Lume EcoSystem (LDE1) - 1% Dimming	LH1
DALI 1% Dimming	D11
Factory Options	
Black Cord	BKCD
Emergency Circuit	_EC
Emergency Battery Pack	_EM

UNLIT SYSTEM ORDERING

System Series	AUMR
Mora Build unlit	AUMR
Style	
Wave A	WVA
Wave B	WVB
Acoustic Panel Color	
See page 10 for color offering	
Size (nominal)	
4' x 4'	44
5' x 5'	55
6' x 6'	66
7' x 7'	77
8' x 8'	88
Blade Spacing	
4" on center	40C
6" on center	60C
12" on center	120C
(6 x 6, 7 x 7 and 8 x 8 sizes only)	
System Mounting	
Direct to Strut: StrutKlip	DTSK
Direct to Strut: Magnet	DTSM
Cable Suspension (24" length)	24CS

Mora® Create

INTEGRATED ACOUSTIC CEILING AND LIGHTING SYSTEM



SYSTEM FEATURES

Mora combines TruBlade® slim, 9mm thick, sound absorbing acoustic baffles with optional continuous Seem® 1 Acoustic luminaires.

Available in three designs: Alpine, Radiate, and Ripple.

Custom sized arrays to fit the exact room dimensions.

TruBlade's top aluminum extrusion optimizes stability and straightness.

Blade spacing available in 4" , 6" or 12" on center.

Luminaire spacing in 1ft increments.

Seem 1 Acoustic luminaires feature AirCore® patent pending, eco-friendly technology that maximizes sound absorption and reduces ecological impact.

Frosted acrylic lens provides uninterrupted illumination, without pixels or shadows.

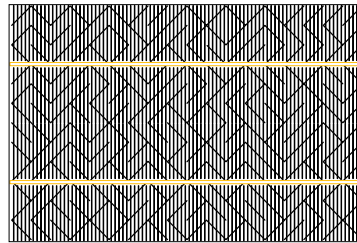
Choice of lumen output levels to meet a wide variety of application needs.

Available in a range of curated printed finish options, including The Naturals and Cosmic.

ALPINE



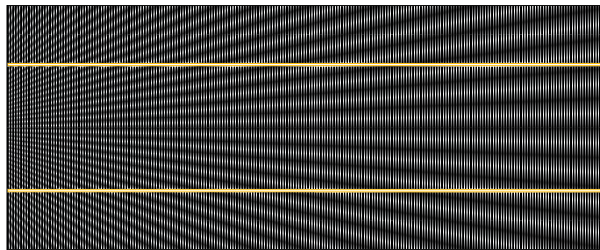
Alpine elevates ceilings with its rugged, angular pattern. Defined geometric figures emerge from the surface and shift at various viewing angles.



RADIATE



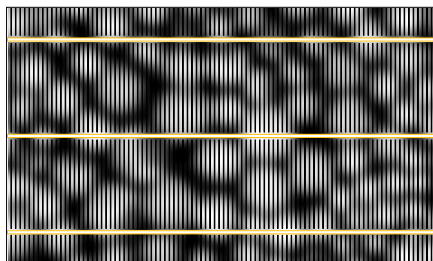
Radiate fills the ceiling with soft undulations that extend from a central point. The symmetrical, rhythmic pattern conveys a strong sense of direction and perspective as the motif spreads away from its origin.



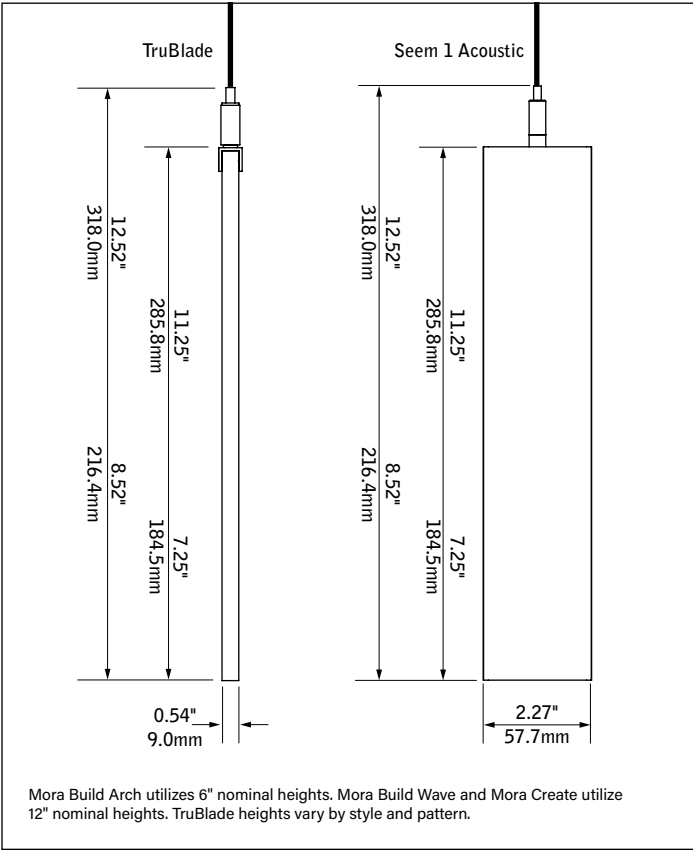
RIPPLE



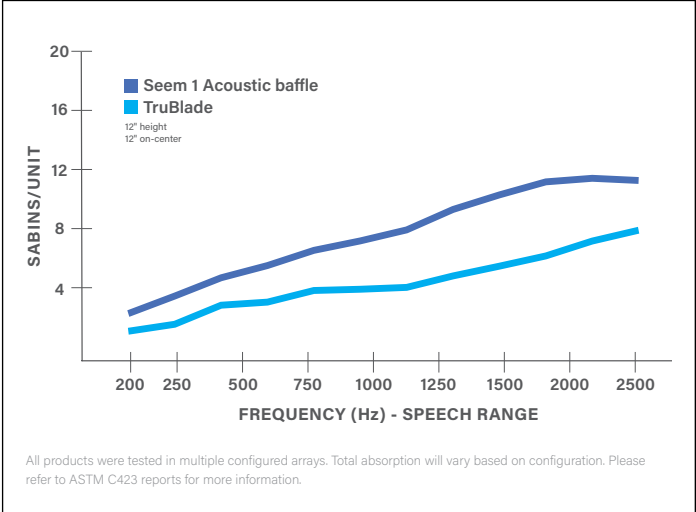
Ripple's gently flowing pattern conveys an organic feel with random waves that surge and swell across the ceiling.



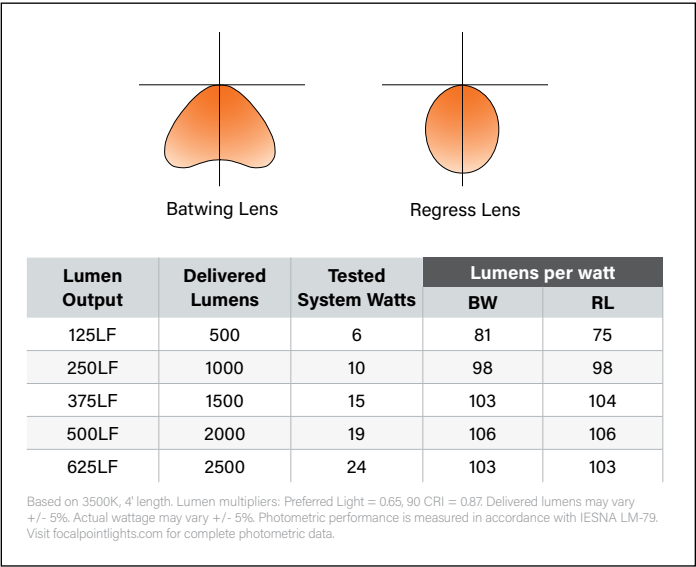
COMPONENT DIMENSIONAL DETAILS



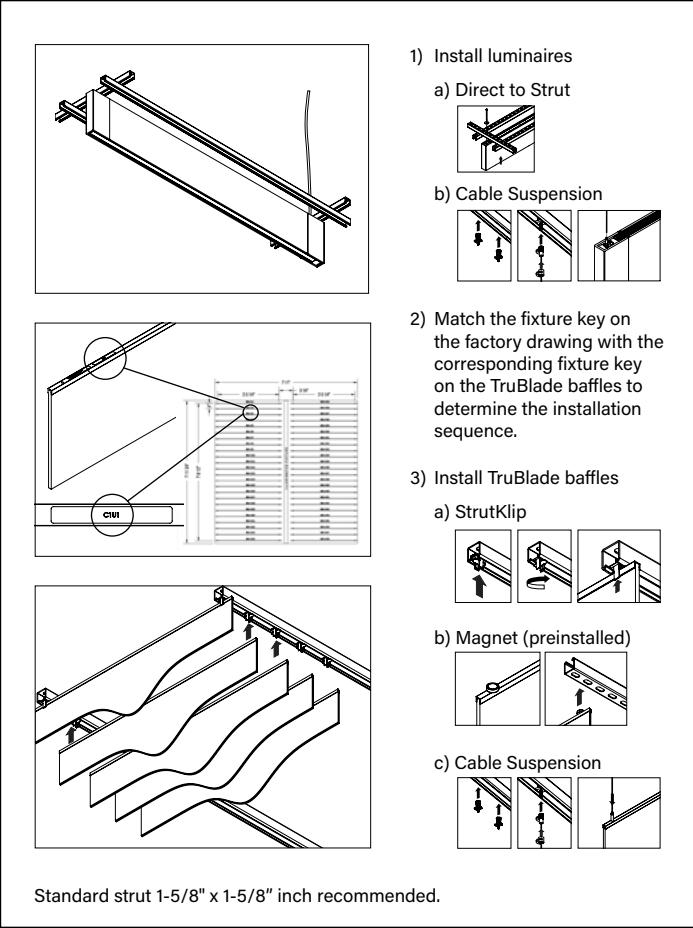
ACOUSTIC PERFORMANCE



LUMINAIRE DISTRIBUTIONS & PERFORMANCE



INSTALLATION METHODS



SPECIFICATIONS

Acoustic Material

Content	Housing material is 100% polyester containing up to 50% of recycled plastic bottles (PET felt) and is moisture resistant. See page 10 for color offering. Acoustic material colors are subject to change without notice. For the most current color options, please visit focalpointlights.com/acousticsolutions. Lead times may vary depending on color.
Cleaning and Care	Polyethylene Terephthalate (PET) felt can be vacuumed to remove dust. For spills and stains, blot away any excessive moisture from spills off the material as quickly as possible. Wipe the area with a damp cloth and blot dry. If the staining persists, apply a small quantity of carpet cleaner mixed with water on a dampened cloth. Blot well after each application. Make sure to test this procedure in a discreet area before you use it in a visible area.
PET Thickness	9mm
Surface Burning Characteristics	ASTM E84 Class A / CAN ULC S102 Flame Spread: 0 Smoke Development Index: 300
Colorfastness	AATCC 16A Option 3 Class 4 minimum at 40 hours

Acoustic Performance

Acoustic testing is performed on all Focal Point acoustic products and varies based on installation and configuration. ASTM C423 test reports can be downloaded from focalpointlights.com. Contact acoustic.solutions@focalpointlights.com for technical questions.

Sabins	Sabins is a unit of sound absorption. It measures how well one square foot of material absorbs sound. Focal Point has averaged the Sabins per unit at four specific frequency bands representing the human speech range (250, 500, 1000, 2000 Hz) to determine the Sabins per product. 8' length, 12" height: TruBlade 12" OC = 5.08 Sabins Seem 1 Acoustic 12" OC = 5.08 Sabins
--------	---

Construction

Possible variance in blade vertical alignment due to material tolerance (+/-1°).

LED System

Proprietary linear LED module incorporates premium LEDs on a robust platform to achieve excellent thermal management. LEDs are placed to promote a uniform appearance. Available in 3000K, 3500K or 4000K with both 80 and 90 CRI options. LED drivers are replaceable from above. Color accuracy <3 SDCM.

Weight

TruBlade: will not exceed 3.75lbs per unit.
Seem 1 Acoustic: will not exceed 21.5lbs per 8ft.

Optic

Reflectors fabricated of 22 Ga. steel finished in High Reflectance White powder coat. Extruded acrylic lens .07" thick with frosted finish.

Electrical

Luminaires are pre-wired with factory installed branch circuit wiring and over-molded quick connects. Standard 120-277V constant current driver includes 0-10V analog dimming. Power factor > .9. Power cord white as standard.

Canopy (optional)

Polyester powder coat applied over a multi-stage pre-treatment. Canopy white as standard.

Emergency Battery

Emergency output - 10 watts for 90 minutes. Maximum mounting height: 16.83ft.

Labels

ETL listed in accordance with UL standards. Suitable for Dry Locations, indoor use only.

Lumen Maintenance

Reported: L70 at >61,000 hours Calculated: L70 at 470,000 hours
 L90 at >61,000 hours L90 at 115,000 hours
Derived from EPA TM-21 calculator. Based on typical conditions, consult factory for additional data.

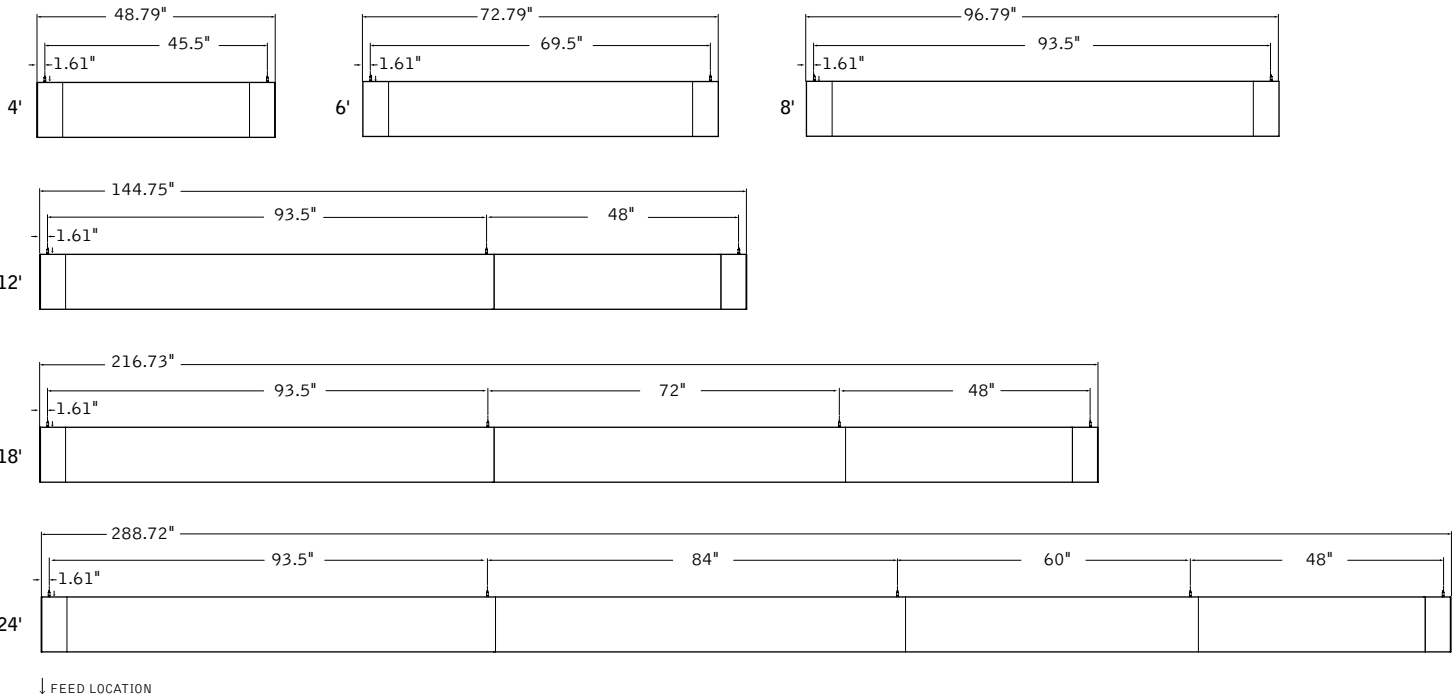
Reliability

At Focal Point, our products are designed to stand the test of time. Each luminaire is engineered using superior components, manufactured with the utmost care and rigorously tested. Contact us for reliability data.

Warranty

LED system rated for operation in ambient environments up to 25°C. Illuminated systems 5-year limited warranty. Unlit systems 1-year limited warranty.

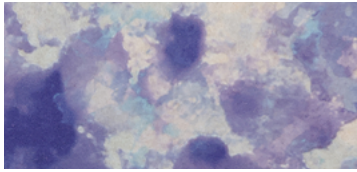
MOUNTING DETAILS LUMINAIRES



Acoustic Materials

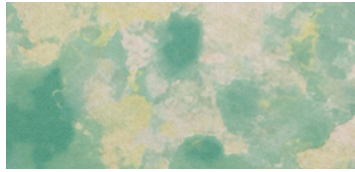


COSMIC (25% SCALE)



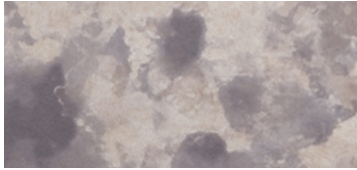
BLUE STAR

BSR



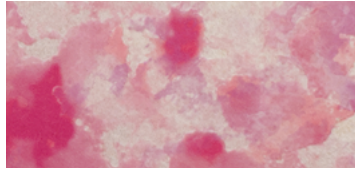
GREEN QUASAR

GQR



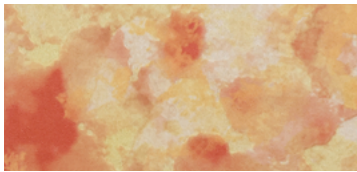
MOON ROCK

MRK



PINK NEBULA

PPN



SOLAR FLARE

SRF

THE NATURALS (25% SCALE)



LIGHT OAK

LOK



GRAY ELM

GRE



CHESTNUT

CHT



WALNUT

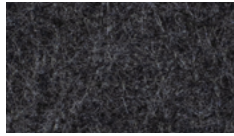
WLT

STANDARD PET



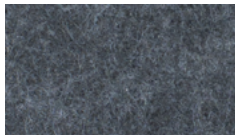
PURE BLACK

PBK



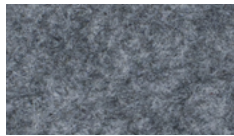
CHARCOAL GRAY

CHG



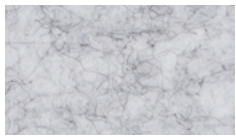
SLATE

SLT



SHADOW GRAY

SDG



SILVER GRAY

SLG



PEARL ICE

PIC



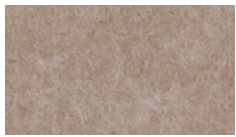
CLASSIC WHITE

CWH



NATURAL LINEN

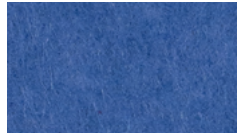
NTL



HAZELWOOD

HZW

PREMIUM PET



CORNFLOWER BLUE

CFB



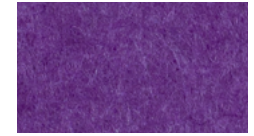
DENIM BLUE

DNB



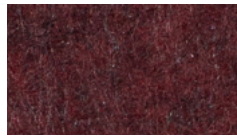
MIDNIGHT BLUE

MNB



DEEP PURPLE

DPP



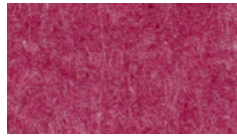
BRICK RED

BRD



CHERRY RED

CHR



BERRY

BRY



BLUSH

BLS



CARROT

CRT



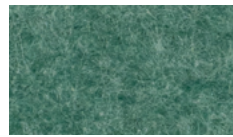
PINEAPPLE

PNA



DEEP WATER

DWT



SEAFOAM

SFM



EMERALD GREEN

EMG



LIMESTONE

LMS

Slight color variations are inherent to the PET felt manufacturing process. Color renditions on screens vary due to display settings and lighting conditions.

Order samples at focalpointlights.com/Samples

Declare.

PET
Focal Point, LLC

Final Assembly: Chicago, Illinois, USA
Life Expectancy: 30 Year(s)
End of Life Options: Salvageable/Reusable in its Entirety,
Recyclable (100%)

Ingredients:

Polyethylene terephthalate: PET; N, N'-Ethylene bisstearamide: Octadecanamide, N,N'-1,2-ethanediylbis-;
Stearic Acid; Antioxidant 1076: Benzenepropanoic acid, 3,5-bis(1,1-dimethylethyl)-4-hydroxy-, octadecyl ester; Antioxidant KY-405: Benzenamine, 4-(1-methyl-1-phenylethyl)-N-[4-(1-methyl-1-phenylethyl)phenyl]-;
Titanium Dioxide: Titanium dioxide

Living Building Challenge Criteria:

I-13 Red List:

■ LBC Red List Free % Disclosed: 100% at 100ppm
□ LBC Red List Approved VOC Content: Not Applicable
□ Declared

I-10 Interior Performance: Not Compliant
I-14 Responsible Sourcing: Not Applicable

FPL-0001
EXP. 01 JUN 2026
Original Issue Date: 2020

MANUFACTURER RESPONSIBLE FOR LABEL ACCURACY
INTERNATIONAL LIVING FUTURE INSTITUTE™ living-future.org/declare