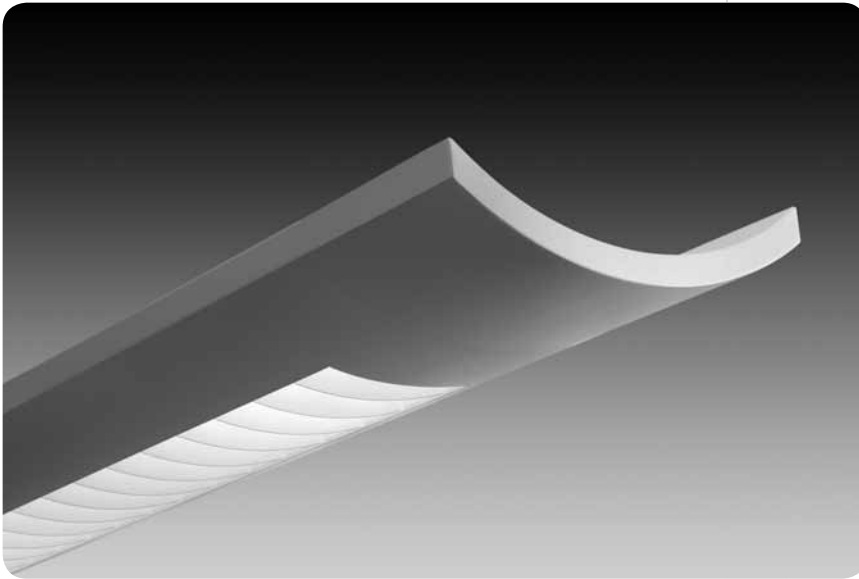


Armstrong® DC FlexZone™ Compatible  
**verve™ IV**



**features**

Suspended linear direct/indirect fluorescent with radial or flat blade baffle, parabolic louver, frosted acrylic, round patterned or square patterned diffuser.

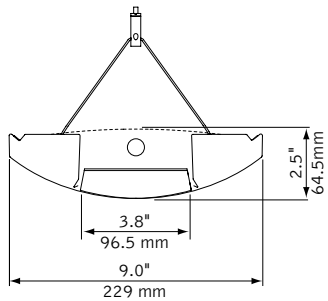
Now with EMerge Alliance® Registered options compatible with Armstrong DC FlexZone ceilings for plug-and-play flexibility in DC power applications.

Standard distribution is 60% indirect/40% direct.

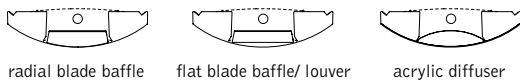
Optional DR optics deliver light where you need it. Increased direct illumination suits ceiling heights from low to high, providing an opportunity to reduce lamps while maintaining light levels.

One-piece steel housing with 5" die-cast end caps.

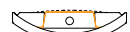
**dimensional data**



**shielding options**



**downlight accessories**

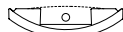


DR0, DR1, DR2 & DR4



PDR

**lamping options**



T5H0 LAMP

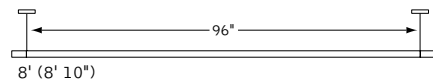
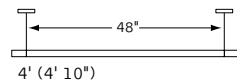


T5/T5H0 LAMP T5 LAMP



T8 LAMP

**fixture information**



**shielding options**



Radial Blade Baffle

Flat Blade Baffle

Flat Blade Parabolic Louver



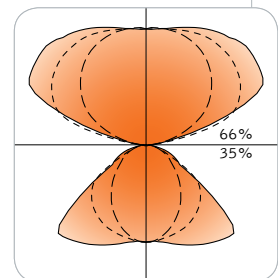
Round Patterned Diffuser

Square Patterned Diffuser

Frosted Acrylic Diffuser

**performance**

1-Lamp T5H0  
Radial Blade Baffle  
96% Efficiency  
1467 cd @ 135°



Visit [focalpointlights.com](http://focalpointlights.com) for complete photometric data.

fixture:

project:

### specifications

#### construction

One-piece 20 Ga. steel housing.  
 Die-cast 5" end cap fastened to housing.  
 For row installation, internal brackets form hairline joint.  
 Standard lengths are available in 4' and 8'.  
 All luminaires are provided with Y-cable suspension mounted on 48" or 96" centers.

4' unit weight: 20 lbs.  
 8' unit weight: 30 lbs.

#### optic

Radial blade baffle: 0.9"H x 1.5" frequency.  
 Flat blade baffle: 0.7"H x 1.5" frequency.  
 Flat blade louver: 0.7"H x 1.3" frequency.  
 Frosted Acrylic Diffuser is 0.20" thick.  
 Patterned Acrylic Diffusers are 0.20" thick combined with additional 0.20" acrylic lens.  
 Louver is fabricated of low iridescent, semi-specular premium grade aluminum.  
 White baffle is fabricated from steel.  
 Clear acrylic internal debris shield supplied standard on acrylic diffuser options.  
 Optional Downlight Reflector optics fabricated of die-formed aluminum.  
 Optional dust cover is extruded acrylic.

#### electrical

Factory installed low voltage cable assembly and connector at feed location included.  
 Load cable assembly connects fixture to low voltage bus bar above ceiling.  
 100W max per feed. Luminaires over 100W will require multiple feeds.  
 Class 2 low voltage DC ballasts have a Class "P" rating.  
 0-10V dimming standard.

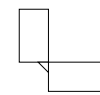
#### finish - Painted after fabrication.

Polyester powder coat applied over a 5-stage pretreatment.  
 Canopy finished in Matte Satin White.



### ordering

<b>fixture series</b>	<b>FV4S</b>
Verve IV	FV4S
<b>shielding</b>	
Radial Blade Baffle - White	RB
Flat Blade Baffle - White	FB
Semi-Specular, Flat Blade Parabolic Louver	PL
Frosted Acrylic Diffuser	AC
Round Patterned Diffuser	RA
Square Patterned Diffuser	SA
<b>optional downlight accessories**</b>	
Downlight Reflector - isolates center lamp (3-lamp & dual circuit options only)	PDR
100% downlight	DR0
up to 85% downlight	DR1
up to 80% downlight	DR2
up to 60% downlight	DR4
<b>lamping</b>	
2 Lamp T5	2T5
3 Lamp T5	3T5
1 Lamp T5H0	1T5H0
2 Lamp T5H0	2T5H0
2 Lamp T8	2T8
3 Lamp T8	3T8
<b>circuit</b>	
Single Circuit	1C
Dual Circuit	2C
<b>voltage</b>	<b>24</b>
24 Volt	24
<b>ballast</b>	<b>DCF</b>
DC 0-10V Dimming Ballast	DCF
<b>mounting</b>	
24" Cable Suspension	C24
48" Cable Suspension (Specify "J" in place of "C" for 5" dia. canopies at power feed and 2" dia. canopies at non-feed locations)	C48
<b>factory options</b>	
Acrylic Overlay on Louver or Baffle (May not be combined with Dust Cover)	A0
Dust Cover (Consult factory for compatibility. May not be combined with A0)	DC
Include 3000K Lamp*	L830
Include 3500K Lamp*	L835
Include 4100K Lamp*	L841
<b>finish</b>	
Matte Satin White	WH
Titanium Silver	TS
<b>luminaire length</b>	
(8' and longer lengths may require multiple feeds. Consult factory for continuous rows)	
4'	4'
8'	8'
<b>integrator options</b>	
90-degree Corner	FV4-90



\* for more information see Reference section. \*\*lamp type will effect actual percentage values. See IES file for exact uplight/downlight %.