

SCONCE

softlite™ VI



features

ADA compliant wall sconce that compliments entire Softlite™ family.

1', 2' and 4' nominal lengths provide endless design capabilities.

Detachable perforated lamp shield allows for quick cleaning and re-lamping.

Softlite™ Sconce makes an exceptional aesthetic statement in corridors, conference rooms, private or open offices, reception areas or other high-end applications.

companion luminaire



recessed



recessed



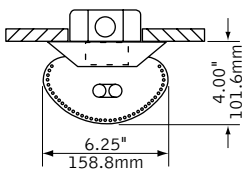
linear



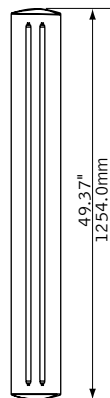
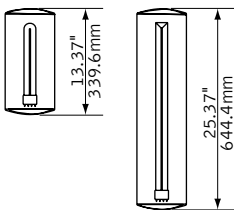
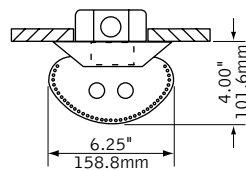
WMR
Designed for
MRI use

dimensional data

1' & 2' fixtures



4' fixture



lamping options

1' fixture



18W BIAx LAMP

2' fixture



40W BIAx LAMP



T5/T5HO LAMP



T8 LAMP

4' fixture



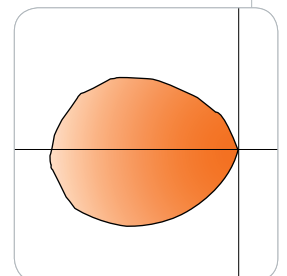
T5/T5HO LAMP



T8 LAMP

performance

1-Lamp 18W Biax
74% Efficiency
180 cd @ 85°

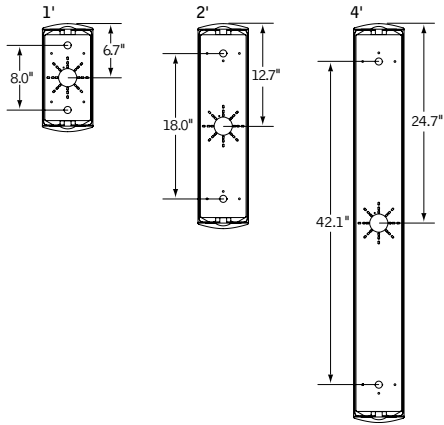


Visit focalpointlights.com for complete photometric data.

fixture:

project:

mounting information



specifications

construction

20 Ga. Steel housing/reflector.

Lamps are shielded by detachable 22 Ga. steel perforated lamp shield with acrylic lens insert.

Die-cast aluminum end caps complete shield assembly.

- 1' unit weight: 4 lbs.
- 2' unit weight: 7 lbs.
- 4' unit weight: 12 lbs.

optic

20 Ga. C.R.S. reflector finished in High Reflectance White powder coat.

electrical

Luminaires are pre-wired for specified circuits, with thermally protected Class "P" electronic ballasts.

Optional dimming ballasts available.

Consult factory for specifications and availability.

UL and cUL (does not include biax) listed.

finish

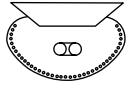
Polyester powder coat applied over a 5-stage pre-treatment.

ordering

luminaire series		<u>FS6</u>
Softlite Sconce	FS6	
profile		<u> </u>
1' Length	1	
2' Length	2	
4' Length	4	
lamping		<u> </u>
1' Length Only		
1 Lamp 18 Watt Biax	1BX18	
2' Length Only		
1 Lamp 40 Watt Biax	1BX40	
1 Lamp T5	1T5	
2 Lamp T5	2T5	
1 Lamp T5HO	1T5HO	
2 Lamp T5HO	2T5HO	
1 Lamp T8	1T8	
2 Lamp T8	2T8	
4' Length Only		
1 Lamp T5	1T5	
2 Lamp T5	2T5	
1 Lamp T5HO	1T5HO	
2 Lamp T5HO	2T5HO	
1 Lamp T8	1T8	
2 Lamp T8	2T8	
circuit		<u>1C</u>
Single Circuit	1C	
voltage		<u> </u>
120 Volt	120	
277 Volt	277	
347 Volt	347	
<small>(Consult factory for availability) (347V not available on 1' luminaire)</small>		
ballast		<u> </u>
Electronic Instant Start <20% THD (T8 & 40W Biax only)	E	
Electronic Program Start <10% THD	S	
Electronic Dimming Ballast* (Available on 2' and 4' units only)	D	
mounting		<u>WM</u>
Wall Mount	WM	
factory options		<u> </u>
Emergency Battery Pack* (2' & 4' units only)	EM	
HLR/GLR Fuse	FU	
Include 3000K Lamp*	L830	
Include 3500K Lamp*	L835	
Include 4100K Lamp*	L841	
finish		<u>WH</u>
Matte Satin White	WH	

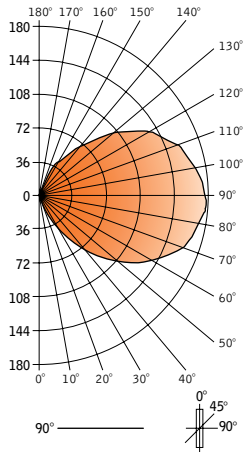
* for more information see Reference section.

softlite™ VI



Filename: FS611BX18.IES
 Catalog #: FS6-1-1BX18-1C-120-S-WM-WH
 Efficiency: 74%
 Test #: 12016.0

CANDLEPOWER DISTRIBUTION



Vertical Angle	Horizontal Angle				Zonal Lumens
	0°	22.5°	45°	67.5°	
0°	0	0	0	0	0
5°	0	0	0	0	0
15°	9	10	7	8	2
25°	30	28	24	20	8
35°	64	60	49	39	22
45°	95	92	76	60	43
55°	126	121	102	82	68
65°	151	146	125	95	89
75°	170	162	139	110	109
85°	180	174	148	117	120
90°	176	171	145	114	91
95°	178	169	146	115	90
105°	164	159	135	107	84
115°	144	139	120	95	75
125°	118	113	96	74	66
135°	87	84	70	58	45
145°	52	54	45	37	23
155°	27	27	23	20	9
165°	9	9	8	9	2
175°	0	0	1	0	0
180°	0	0	0	0	0

LUMEN SUMMARY

	Zone Lumens	% Lamp	% Fixt
	0°-30°	9	1.0
	0°-90°	460	50.1
	90°-130°	379	41.3
	90°-180°	458	49.9
Total Luminaire	0°-180°	918	100.0

Numbers indicate percentage values of