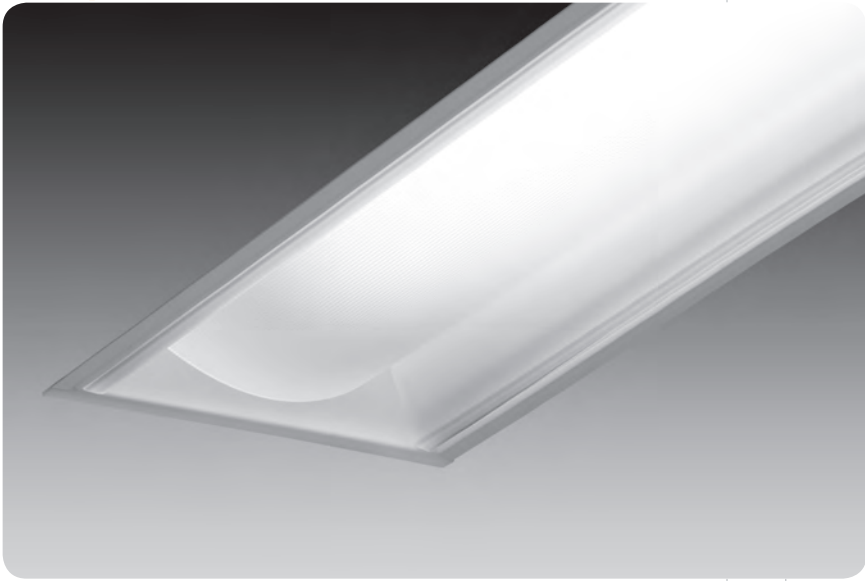


# apollo 8



## features

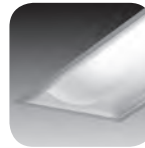
8" wide recessed fluorescent luminaire available in 2', 3' & 4' lengths.

1 or 2 lamp T5, T5H0 or T8 lamps provide ambient illumination in a clean architectural design.

Sealed optical compartment for easy cleaning and maintenance.

Radial extruded acrylic diffuser with internal ribs provides low brightness, even illumination and ease of cleaning.

## companion luminaires

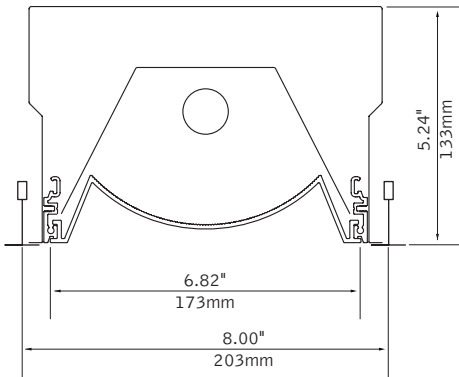


apollo 8 with exam function



apollo 1 & 2

## dimensional data



## lamping



T5/T5H0



T8

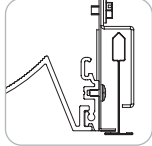
fixture:

project:

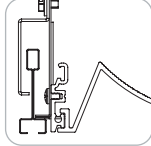
### mounting information

#### grid

specify "G" for flat 9/16" and 15/16" tee or "ST" for 9/16" slot tee grid types.



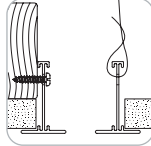
"G" flat tee  
Luminaires may be installed in T-bar ceiling systems up to 1 11/16" high.



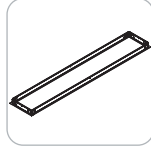
"ST" slot tee

#### drywall frame kit

specify "DF" Drywall Frame Kit for drywall ceiling conditions.



Use tie-wire or screws to secure frame kit.



cut out dimensions:  
8": Min: 8.3125"  
Max: 8.625"  
4": Min: 48.325"  
Max: 48.6875"

### specifications

#### construction

20 Ga. steel housing.  
Lamp compartment is sealed and enclosed by detachable extruded acrylic diffuser.  
Bottom access 20 Ga. steel ballast compartment.

weight: 32 lbs

#### optic

One-piece 20 Ga. steel side reflectors finished in Matte Satin White powder coat.  
20 Ga. steel center reflector finished in High reflectance White.

#### electrical

Ballasts are thermally protected and have a Class "P" rating.  
Consult factory for dimming specifications and availability.  
UL and cUL listed.

#### finish

Polyester powder coat applied over a 5-stage pre-treatment.  
Optional Anti-Microbial paint finish available.

### ordering

luminaire series FMA8  
Apollo 8 FMA8

nominal size \_\_\_\_\_  
8"x2' 82  
8"x3' 83  
8"x4' 84

shielding RA  
Radial Acrylic Lens RA

lamp quantity \_\_\_\_\_  
1 Lamp 1  
2 Lamp 2

lamp type \_\_\_\_\_  
T5 T5  
T5H0 T5H0  
T8 T8

circuits \_\_\_\_\_  
Single Circuit 1C  
Dual Circuit 2C

voltage \_\_\_\_\_  
120 Volt 120  
277 Volt 277

ballast \_\_\_\_\_  
Electronic Instant Start <20% THD E  
Electronic Program Start <10% THD S  
Electronic Dimming Ballast\* D

mounting \_\_\_\_\_  
Grid Mount G  
Slot tee ST

factory options \_\_\_\_\_  
Chicago Plenum CP  
Drywall Frame Kit DF  
Emergency Battery Pack\* EM  
Earthquake Clips EQ  
Single Fuse and Holder FU  
Flex Whip FW  
Separate Circuit\* SC  
Separate Circuit Tandem\* SCT  
Labor Saving Master Satellite\* LS  
Ballast Saving Tandem\* BST  
Include 3000K Lamp\* L830  
Include 3500K Lamp\* L835  
Include 4100K Lamp\* L841

finish \_\_\_\_\_  
Matte Satin White WH  
Matte Satin White Anti-Microbial WHA

\* for more information see Reference section.