

6.75" x 6.75" – wall wash

id[®]

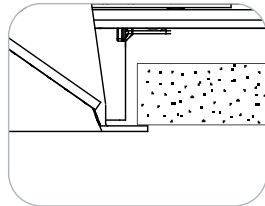
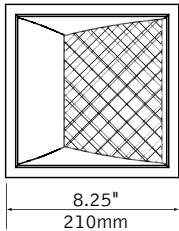
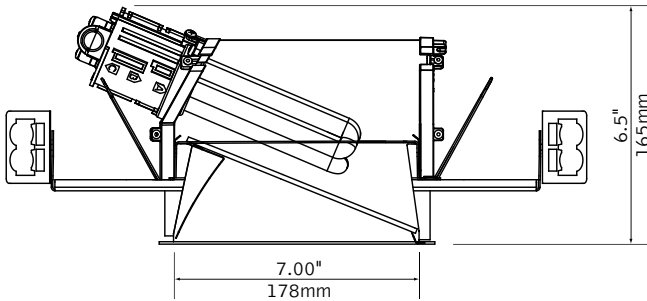


CFL



Patent Pending

dimensional data



features

Overlap trim features:

- One piece die-cast construction creates seamless integration with reflector eliminating mitered corners.
- Die-cast flange maintains tight fit of reflector corners.
- **SmartLock™** clip allows for quick removal and re-assembly of trim components for field painting.

Centered optics achieved with **CenterLock™** die-cast socket cup which locates and locks 26, 32 and 42 watt lamp in center of aperture.

LampAlign™ allows installation of upper reflector in any direction regardless of housing direction. Lamps are aligned for consistent appearance and light distribution.

Reflector design eliminates tabs in corners for a seamless, no light leaks look.

1" tall housing collar rotates up to 90°.

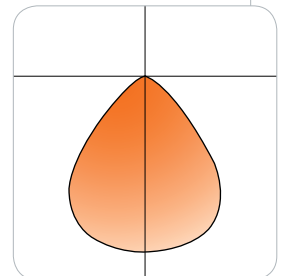
lens option



MicroGlow

performance

- 1-Lamp 32W Triple Tube
- Downlight Optic with MicroGlow Lens, Clear Diffuse
- 52% Efficiency
- 750 cd @ 5°



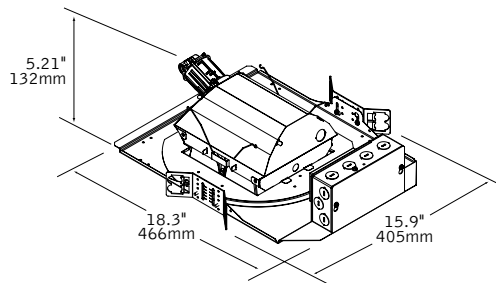
Visit focalpointlights.com for complete photometric data.

april 2011 E

fixture:

project:

details



specifications

housing

Frame features up to 90-degree locking adjustment of aperture after installation for parallel alignment to walls or adjacent fixtures.

Frame may be installed into ceiling thicknesses up to 1". For thicker ceiling consult factory.

Flex conduit with screw tight fittings mechanically fasten to CenterLock™ socket cup. CenterLock™ provides proper venting for lamps.

Butterfly brackets allow mounting to ½ emt. Order bar hangers as an accessory. Galvanized steel frame includes large Junction box 7" x 3.5" with (10) ½" pry outs. UL listed for through branch wiring, four #12 90°C conductors.

upper reflector

Multi-faceted steel upper reflector mounts to steel end caps and is finished in High Reflectance White. Adjustable socket cup allows 18, 26, 32 and 42W lamps to be centered in the optic to maintain optimal performance.

trim

Parabolic aluminum reflector fastens to die-cast trim flange.

Trim attaches to upper reflector via torsion springs.

Consult factory for custom reflector finishes.

Upper reflector and lower reflector ship separately from housing frame to avoid construction abuse.

.125" thick MicroGlow™ micro prism lens provides lamp obscuration.

electrical

Luminaires are pre-wired for single circuit with thermally protected Class "P" program start <10% THD electronic ballast.

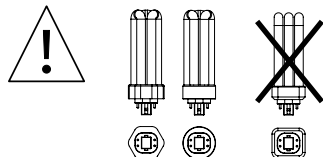
Consult factory for dimming specifications and availability.

UL Listed.

Integral emergency battery test switch and indicator light in optic.

Rotary lock socket allows for easy lamp removal and reduces lamp breakage.

One lamp triple tube compact fluorescent, 4-pin, 26W/32W (Gx24q-3), 42W (Gx24q-4).



finish

Trim flange finished in polyester powder coat over a 5-stage pre-treatment.

housing ordering

housing series	FC66
ID CFL Square Housing	FC66
lamp	
26W Triple Tube, Gx24q-3 (Includes wattage restriction label)	26TT
32W Triple Tube, Gx24q-3	32TT
42W Triple Tube, GX24q-4	42TT
ballast	
Electronic Program Start <10% THD	S
Electronic Dimming Ballast*	D
voltage	
120V	120
277V	277
347V	347
faceplate type	S0
Square Overlap	S0
housing type	T
Thermally Protected, Non-IC	T
factory options	
Chicago Plenum	CP
Emergency Battery Pack*	EM
HLR/GLR Fuse	FU
Include 3000K Lamp	L830
Include 3500K Lamp	L835
Include 4100K Lamp	L841

trim ordering

trim aperture	D66
6.75" Square Aperture	D66
faceplate type	S0
Square Overlap	S0
optic	
Wall Wash MicroGlow Lens	WWMG
color	
Clear Diffuse	CD
Warm Diffuse	WD
Silver Talc Diffuse	TD
flange finish	
White	WH
Black	BK
Titanium Silver	TS
Aluminum Raw	AL

a complete unit consists of two line items, housing and trim
example: FC66-32TT-S-120-S0-T
D66-S0-WWMG-CD-WH

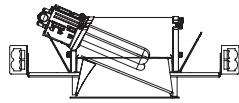
* for more information see Reference section.

6.75x6.75 – wall wash

id®



CFL



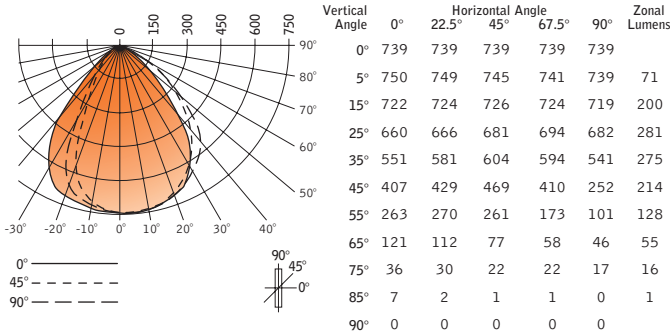
Filename: X.IES

Catalog #: FC66-32TT-S-120-S0-T, D66-S0-WWMG-CD-WH

Efficiency: 52%

Photometric Report #: 15402.0

CANDLEPOWER DISTRIBUTION



LUMEN SUMMARY

Zone	Lumens	% Lamp	% Fixt
0°-30°	551	23.1	44.4
0°-40°	826	64.4	66.6
0°-60°	1168	48.7	94.2
0°-90°	1240	51.7	100.0
Total Luminaire	1240	51.7	100.0

CO-EFFICIENTS OF UTILIZATION

Floor	80				70				50				30				10				00			
Ceiling	70	50	30	10	70	50	30	10	50	10	50	10	50	10	50	10	50	10	50	10	50	10	50	10
Wall	62	62	62	62	60	60	60	60	57	57	55	55	53	53	53	53	53	53	53	53	53	53	53	53
RCR 0	62	62	62	62	60	60	60	60	57	57	55	55	53	53	53	53	53	53	53	53	53	53	53	53
1	58	56	55	53	57	55	52	53	51	51	49	49	48	49	48	49	48	49	48	49	48	49	48	
2	54	51	49	47	53	50	46	49	45	47	44	46	43	46	43	46	43	46	43	46	43	46	43	
3	51	47	44	41	50	46	41	45	40	43	40	42	39	42	39	42	39	42	39	42	39	42	39	
4	47	43	39	37	46	42	36	41	36	40	35	39	35	39	35	39	35	39	35	39	35	39	35	
5	44	39	35	32	43	38	32	37	32	36	32	36	31	36	31	36	31	36	31	36	31	36	31	
6	41	36	32	29	40	35	29	34	29	34	29	33	28	33	28	33	28	33	28	33	28	33	28	
7	38	33	29	26	38	32	26	31	26	31	26	30	26	30	26	30	26	30	26	30	26	30	26	
8	36	30	26	23	35	29	23	30	23	28	23	27	23	27	23	27	23	27	23	27	23	27	23	
9	33	27	23	21	32	27	21	26	20	25	20	25	20	25	20	25	20	25	20	25	20	25	20	
10	31	25	21	19	30	24	18	24	18	23	18	23	18	23	18	23	18	23	18	23	18	23	18	

Numbers indicate percentage values of reflectivity.

Go to www.focalpointlights.com for additional photometric data.