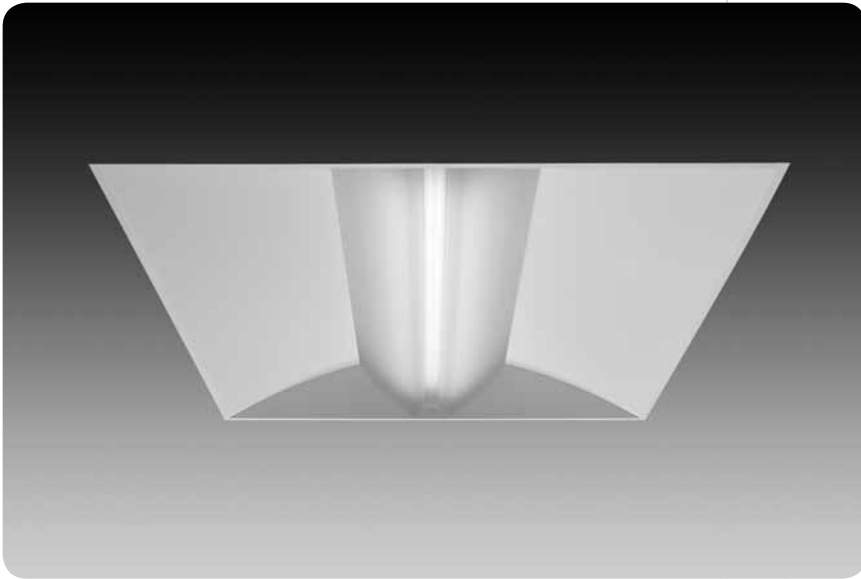


Armstrong® DC FlexZone™ Compatible
aerion® family



Covered by the following U.S. Patents: D605,340; D605,341; D605,342; D608,490

features

High efficiency architectural recessed fluorescent luminaire family. Now with EMerge Alliance® Registered options compatible with Armstrong DC FlexZone ceilings for plug-and-play flexibility in DC power applications.

Aerion's blend of sweeping curves and contemporary lines compliment today's architecture.

Aerion's center lamp chamber provides minimal contrast between the diffuser and side reflectors creating even illumination and comfort.

A shallow 3.6" housing depth flies under the radar of most plenum obstructions.

The lamp diffuser has been designed with an upper and lower track that accepts individual or combinations of accent strips.

shielding options



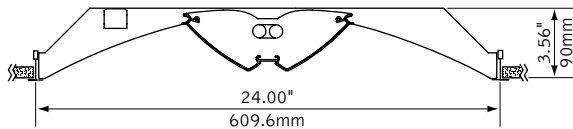
standard diffuser round accent strip square accent strip

color options



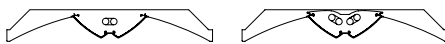
red insert green insert blue insert

dimensional data

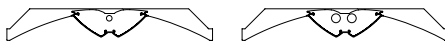


lampping options

2'x2'



BIAX LAMP

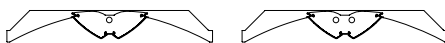


T5HO LAMPS



T8 LAMPS

2'x4'



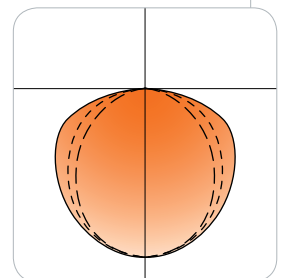
T5/T5HO LAMPS



T8 LAMPS

performance

2'x2' Luminaire
 1-Lamp 40W BiAx
 71% Efficiency
 1560 cd @ 0°



Visit focalpointlights.com for complete photometric data.

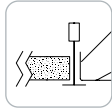
october 2011 D

fixture:

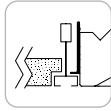
project:

mounting information

Armstrong® DC FlexZone™ compatible



g2
9/16"



g3
slot 9/16

specifications

construction

One piece 20 Ga. steel reflector and housing.
20 Ga. steel ends form finishing housing.
Side access 20 Ga. steel ballast compartment.
Earthquake brackets supplied as standard.

Weight:

2"x2": 17 lbs

2"x4": 25 lbs

optic

20 Ga. steel reflectors finished in matte satin white powder coat.
.095" thick frosted white acrylic lamp diffusers with linear micro-prism pattern.
Optional .020" thick acrylic accent strip available in round or square pattern.

electrical

Class 2 low voltage DC ballasts have a Class "P" rating.
0-10V dimming standard.
Load cable assembly connects fixture to low voltage bus bar.

finish

Polyester powder coat applied over a 5-stage pre-treatment.
Optional Matte Satin White with anti-microbial coating provides 99.99% protection against a broad spectrum of micro-organisms.



ordering

luminaire series	FAR	_____
Aerion	FAR	

nominal size	_____
2' x 2' (Biax only)	22
2' x 4'	24

shielding	_____
Acrylic Diffuser	AC
Acrylic Diffuser with Round Accent Strip	RA
Acrylic Diffuser with Square Accent Strip	SA

optional color inserts (Leave blank for no color)	_____
Red	R
Green	G
Blue	B

lamp quantity	_____
One Lamp	1
Two Lamp	2

lamp type	_____
40 Watt Biax (2'x2' only)	BX40
T5 (2'x4' only)	T5
T5H0 (2x4 - 1-lamp only)	T5H0
T8 (2-lamp only)	T8

ballast	_____
DC 0-10V Dimming	DCF

voltage	_____
24 Volt	24

mounting	_____
DC Suprafine® 9/16" Grid	G2
DC Silhouette® 9/16" Slot Tee	G3

factory options	_____
Air Return (Overall height for luminaire with Air Return is 4.26")	AR
Include 3000K Lamp*	L830
Include 3500K Lamp*	L835
Include 4100K Lamp*	L841

finish	_____
Matte Satin White	WH
Matte Satin White with Anti-Microbial Coating	WHA

* for more information see Reference section.