



FOCAL POINT®

Bringing It All To Light®

ID+ 3.5" Pure Cylinders Application Guide

Lighting with ID+ 3.5" Pure Cylinders and companion downlights

The ID+ 3.5" Pure Cylinder is a versatile lighting tool than can tackle the most complex lighting challenges, at scale.

With short, medium, and custom lengths, as well as a variety of canopies and mounting options – suspended, fixed and swivel stems, and surface mount – it easily integrates into any ceiling to make interior architecture shine. Low or high ceilings, cozy or large spaces, and any type of décor can be enhanced with this sleek and solid cylinder.

Plus, it is the ideal companion to the ID+ 3.5" Downlight as it uses the same optical components, ensuring a uniform light quality with a cohesive design language.

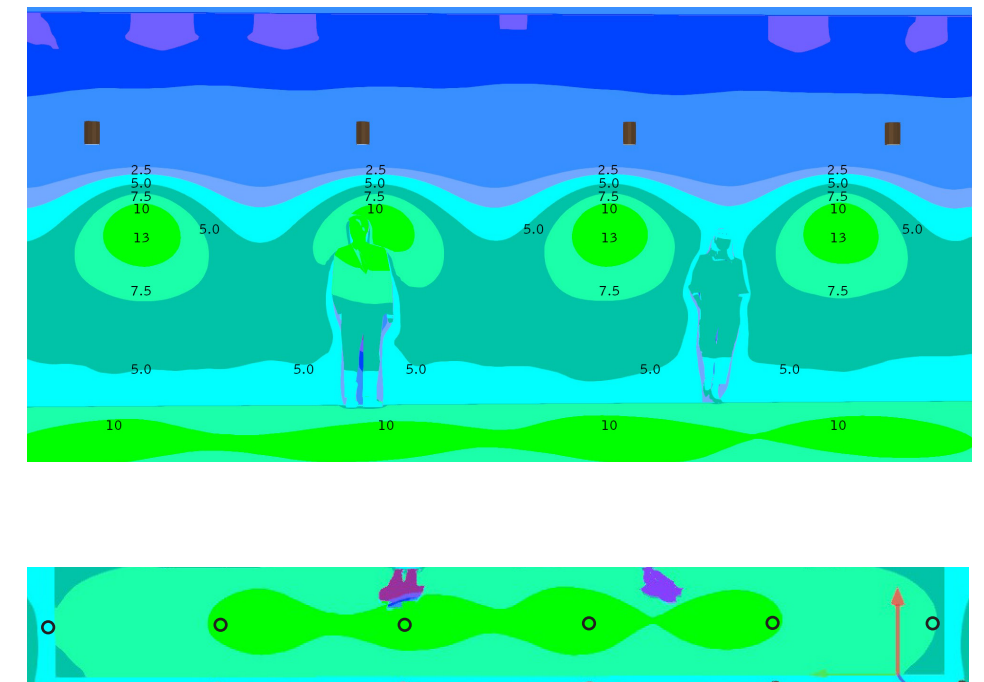
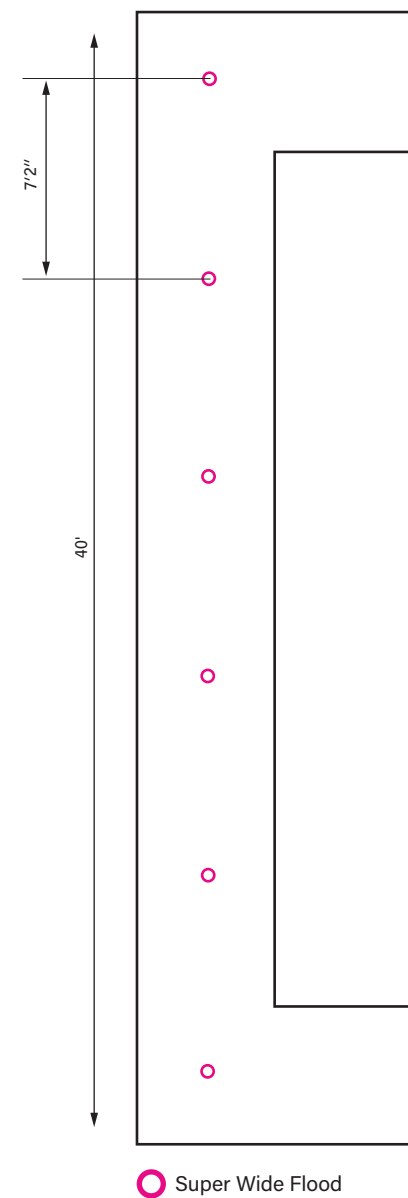
Peruse the following application to get a glimpse of its versatility and demonstrated performance.

Open Ceiling Corridor

Corridors are long, narrow spaces that can be a challenge to light effectively and dynamically. ID+ 3.5" Pure Cylinders with wide beam distributions are a great solution that provides comfortable illumination for transient users, uniform footcandle levels on the floor, and soft gradients on the walls. In addition to being cost-effective and efficacious with a low power consumption, they are aesthetically pleasing, offer various length, finish, and mounting options, and contribute to adding rhythm and interest to circulation spaces.



Open Ceiling Corridor



Specifications*

AREA DETAILS

Calculation Area: 40' x 5'
Ceiling Height: 12'
Luminaire Height: 8' AFF
Luminaire Spacing: 7'2" OC

LUMINAIRE DETAILS

Housing Height: 7"
Lumen Output: 700
Optic: Super Short Cone
Distribution: Super Wide Flood
Reflector Finish: Clear Diffuse

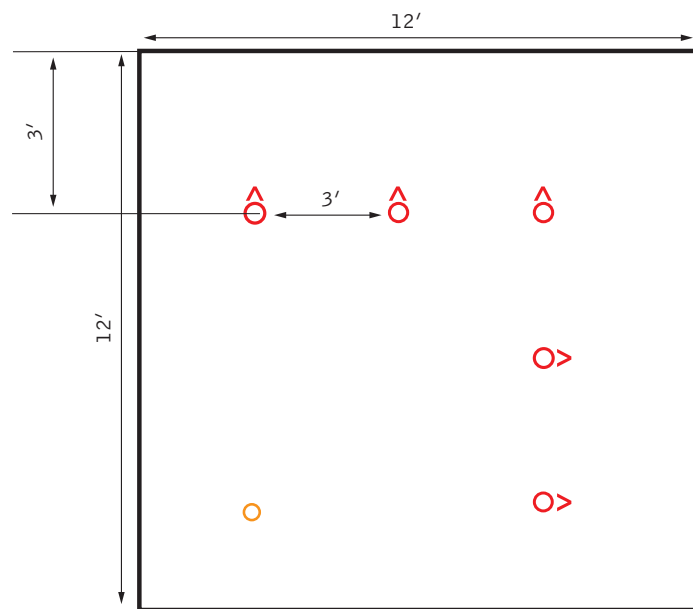
Ordering String:
FLCY3N-RD-7H-700DN-35K-1C-xxx-DSC-WH-xx-
Cx-WH-DSS-SWFL-CD-WH

Performance

Average Illuminance (floor) = 10 fc
Lighting Power Density (LPD) = 0.24
Lumens Per Watt (LPW) = 96
(771 delivered Lumens, 8 Watts per cylinder)

*Reflectances: 80/50/20, Light Loss Factor: 0.9

Low Ceiling Breakout Room



- Wall Wash
- Super Wide Flood

This breakout room with a lower ceiling, surrounded by corridors with higher, unfinished ceilings represents a frequent design challenge, where adjacent spaces with mixed ceiling conditions must be lit harmoniously. ID+ 3.5" Pure Cylinders with multiple lengths and mounting options come to the rescue! The short, 4" form factor with surface mounting is ideal for this space.

Additionally, the room is lit mainly using wall washers that provide a soft glow along the two perpendicular walls, supplemented by a single unit with a Super Wide Flood light distribution in the opposing corner. Alternatively, ID+ 3.5" Downlights could be used in the low-ceiling area, offering a consistent light quality and matching apertures with the cylinders.



Low Ceiling Breakout Room

Specifications*

AREA DETAILS

Calculation Area:	12' x 12'
Ceiling Height:	8'
Luminaire Height:	7.5' AFF
Luminaire Spacing:	3' OC, 3' from wall

WALL WASH LUMINAIRE DETAILS

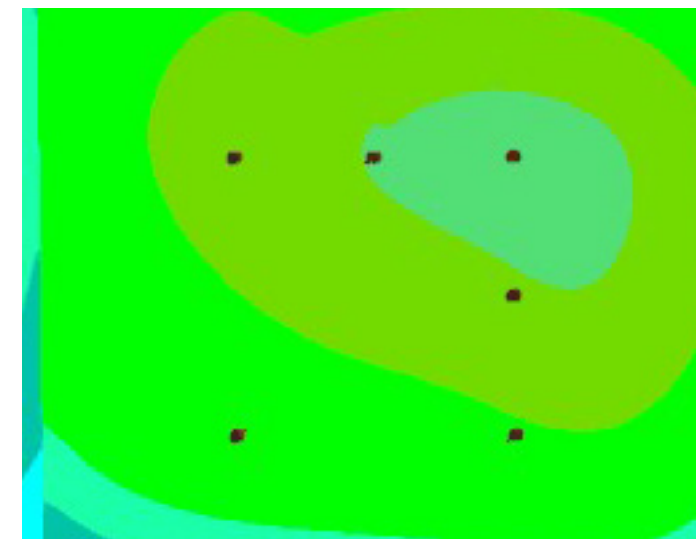
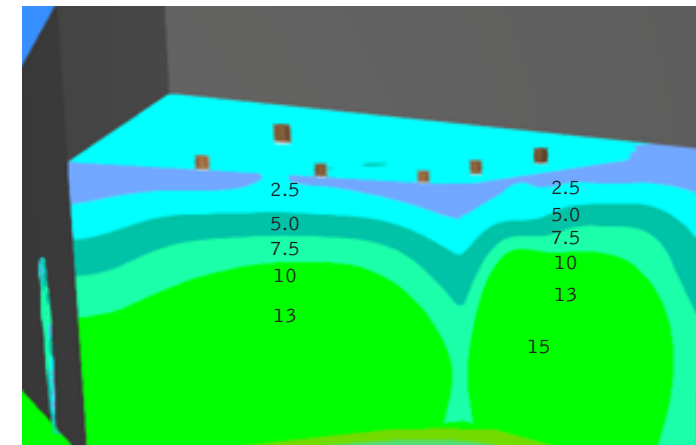
Housing Height:	4"
Lumen Output:	900
Optic:	Short Cone
Distribution:	Wall Wash
Reflector Finish:	Clear Diffuse

Ordering String:
FLCY3WN-RD-4H-900DN-35K-1C-xx-MPC-WH-xx-SM-WWS-CD-WH

DOWNLIGHT LUMINAIRE DETAILS

Housing Height:	4"
Lumen Output:	900
Optic:	Super Short Cone
Distribution:	Super Wide Flood
Reflector Finish:	Clear Diffuse

Ordering String:
FLCY3N-RD-4H-900DN-35K-1C-xx-MPC-WH-xx-SM-DSS-SWFL-CD-WH



PLAN

Performance

Average Illuminance

Floor = 25 fc

Wall = 10 fc

Lighting Power Density (LPD) = 0.42

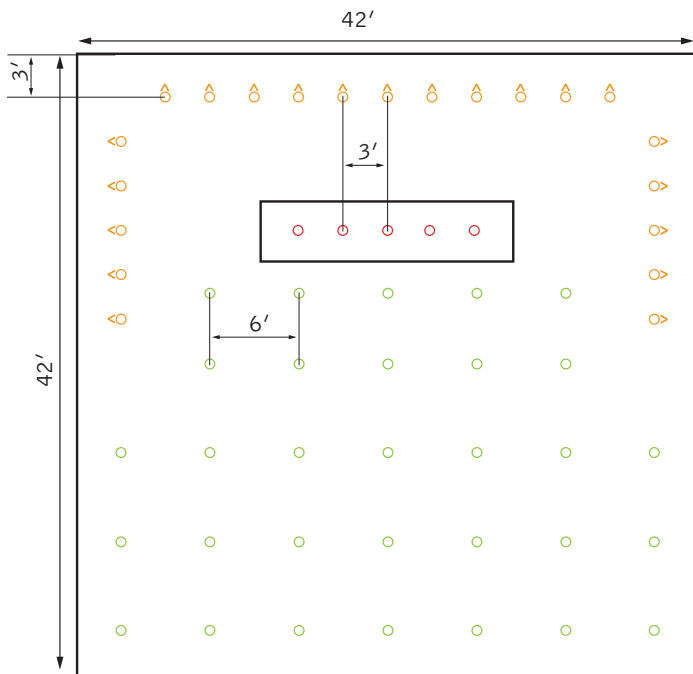
Lumens Per Watt (LPW)

Wall Wash = 98 (983 delivered Lumens, 10 Watts per cylinder)

Downlight = 88 (862 delivered Lumens, 9.8 Watts)

*Reflectances: 80/50/20, Light Loss Factor: 0.9

High Ceiling Lobby



- Wall Wash
- Task - Flood 1 (37°)
- Ambient - Wide Flood

This high ceiling, hospitality lobby is optimally lit using ID+ 3.5" Pure Cylinders. Layers of light with ambient and task lighting, as well as wall washing combine to render the perfect effect and to support user needs in each of the areas. The variable, custom lengths of the cylinders create a chandelier above the reception desk while the narrower beam distribution and deep cut-off ensure a pleasant experience for staff and guests. Attention is drawn to the textured walls with wall washers. Thirty-one units with Wide Flood distribution illuminate the large room.



High Ceiling Lobby

Specifications*

LOBBY DETAILS

Calculation Area:	42' x 42'
Ceiling Height:	16'
Luminaire Height:	12' AFF
Luminaire Spacing:	Downlights: Ambient - 6' OC, Task - 3' OC Wall Wash: 3' OC, 3' from Wall

AMBIENT DOWNLIGHT LUMINAIRE DETAILS

Housing Height:	7"
Lumen Output:	700
Optic:	Short Cone
Distribution:	Wide Flood
Reflector Finish:	Clear Diffuse

Ordering String:
FLCY3N-RD-7H-700DN-35K-1C-xx-SC-BK-xx-Sx-BK-DNS-WFL-CD-BK

TASK DOWNLIGHT LUMINAIRE DETAILS

Housing Height:	Custom heights 12" - 24"
Lumen Output:	700
Optic:	Tall Cone
Distribution:	Flood 1
Reflector Finish:	Clear Diffuse

Ordering String:
FLCY3N-RD-xH-700DN-35K-1C-xx-SC-BK-xx-Cx-BK-DNT-FL1-CD-BK

WALL WASH LUMINAIRE DETAILS

Housing Height:	7"
Lumen Output:	700
Optic:	Tall Cone
Distribution:	Wall Wash
Reflector Finish:	Clear Diffuse

Ordering String:
FLCY3WN-RD-7H-700DN-35K-1C-xx-SC-BK-xx-Sx-BK-WWT-CD-BK

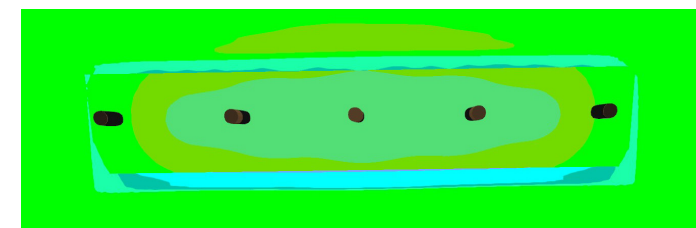
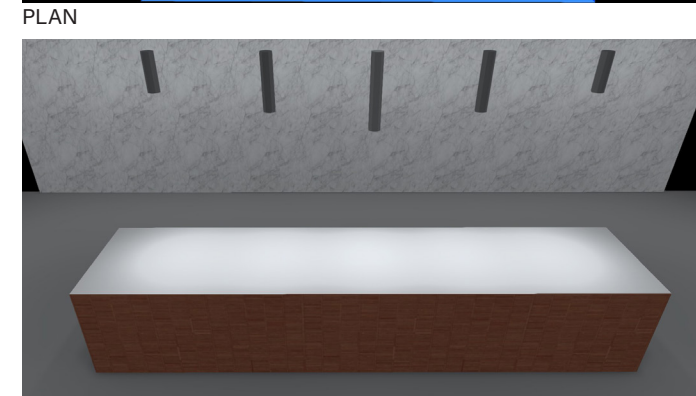
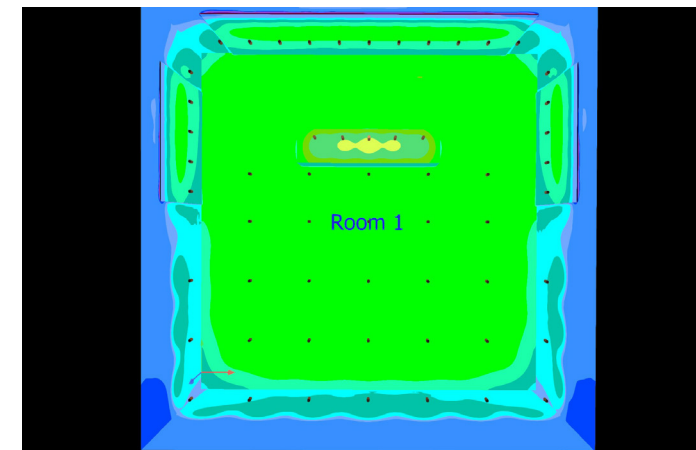
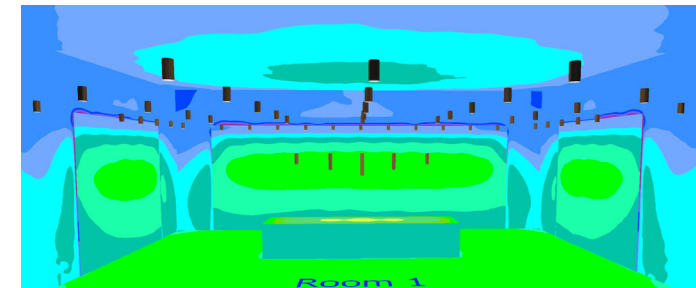
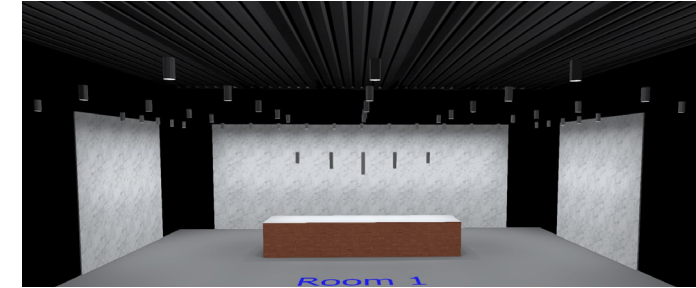
Performance

RECEPTION DESK

Average Illuminance (workplane) = 30 fc
Lumens Per Watt (LPW) = 81.2
(650 delivered Lumens, 8 Watts per cylinder)

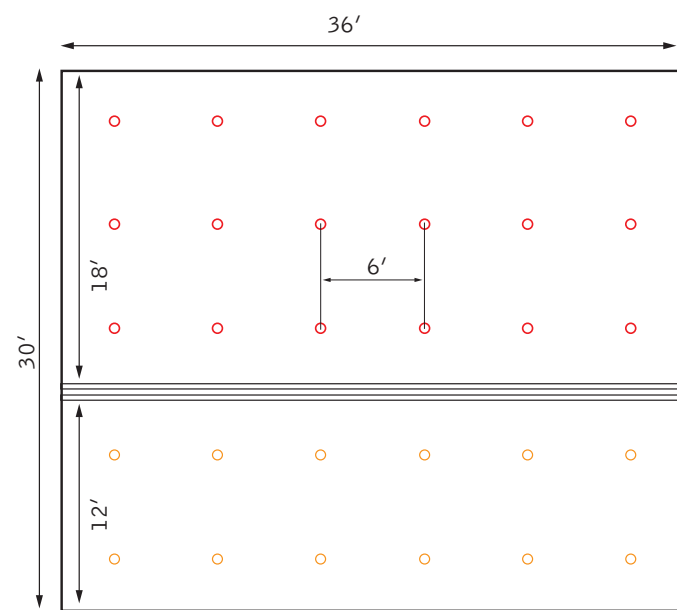
TOTAL LOBBY

Average Illuminance (floor) = 15 fc
Lighting Power Density (LPD) = 0.26
Lumens Per Watt (LPW):
Wall wash = 89
(735 delivered Lumens, 8.3 Watts per cylinder)
Ambient Downlight = 84
(669 delivered Lumens, 8 Watts per cylinder)



PLAN
*Reflectances: 80/50/20, Light Loss Factor: 0.9

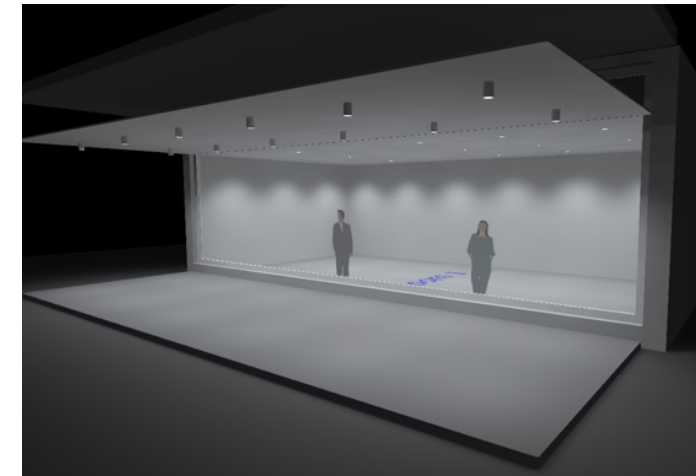
Indoor/outdoor Living Room and Veranda



- ID+ 3.5" Pure Cylinder - Wide Flood
- ID+ 3.5" Downlight - Wide Flood

This indoor/outdoor residential space takes advantage of the wet location rating of the ID+ 3.5" Pure Cylinders used in the outdoor canopy area and paired with the ID+ 3.5" Downlights companion, in the indoor living room. With matching aperture sizes and leveraging the same optical components, the companion luminaires complement each other to create a space with compatible options and a cohesive light quality. They are also a highly efficacious solution with an average lighting power density of only 0.25 watts per square foot.

Indoor/outdoor Living Room and Veranda



Specifications*

OUTDOOR DETAILS

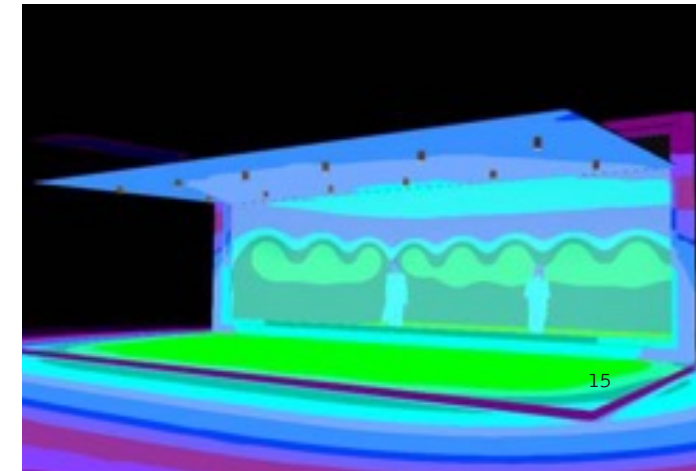
Calculation Area:	36' x 12'
Ceiling Height:	10'
Luminaire Height:	9.5' AFF
Luminaire Spacing:	6' OC

OUTDOOR LUMINAIRE DETAILS

Housing Height:	4"
Lumen Output:	700
Optic:	Short Cone
Distribution:	Wide Flood
Reflector Finish:	Clear Diffuse

Ordering String:

FLCY3N-RD-4H-700L-35K-1C-xx-MPC-BK-xx-SM-DNS-WFL-CD-BK



INDOOR DETAILS

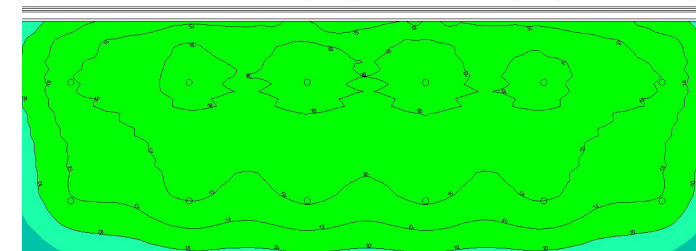
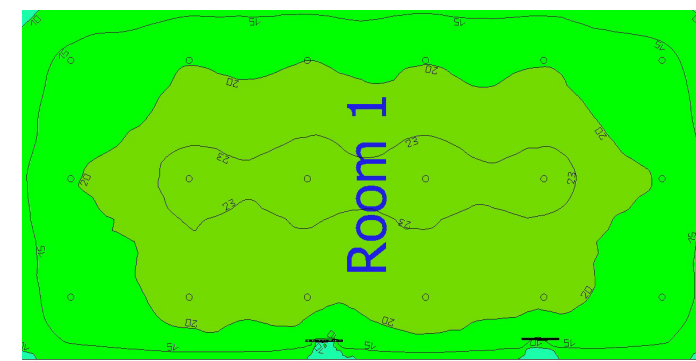
Calculation Area:	36' x 18'
Ceiling Height:	10'
Luminaire Height:	10' AFF
Luminaire Spacing:	6' OC

INDOOR DOWNLIGHT DETAILS

Size:	3.5"
Lumen Output:	900
Optic:	Short Cone
Distribution:	Wide Flood
Reflector Finish:	Clear Diffuse

Ordering String:

FLC3D-RT-900L-xx-xx-xx, LC3-RT-900L-35K-DNS-WFL-CD



PLAN

*Reflectances: 80/50/20, Light Loss Factor: 0.9

Performance

OUTDOOR

Average Illuminance = 15 fc
Lighting Power Density (LPD) = 0.22
Lumens Per Watt (LPW) = 84
(669 delivered Lumens, 8 Watts per cylinder)

INDOOR

Average Illuminance (Floor) = 20 fc
Lighting Power Density (LPD) = 0.27
Lumens Per Watt (LPW) = 87
(852 delivered Lumens, 9.8 Watts per cylinder)

TOTAL COMBINED

Lighting Power Density (LPD) = 0.25
